



COMMUNITY-WIDE EVACUATION ASSESSMENT

PRESENTED BY: BRIAN BOVAIRD

OCTOBER 9, 2025



- Historical Evacuations
- Need for Assessment

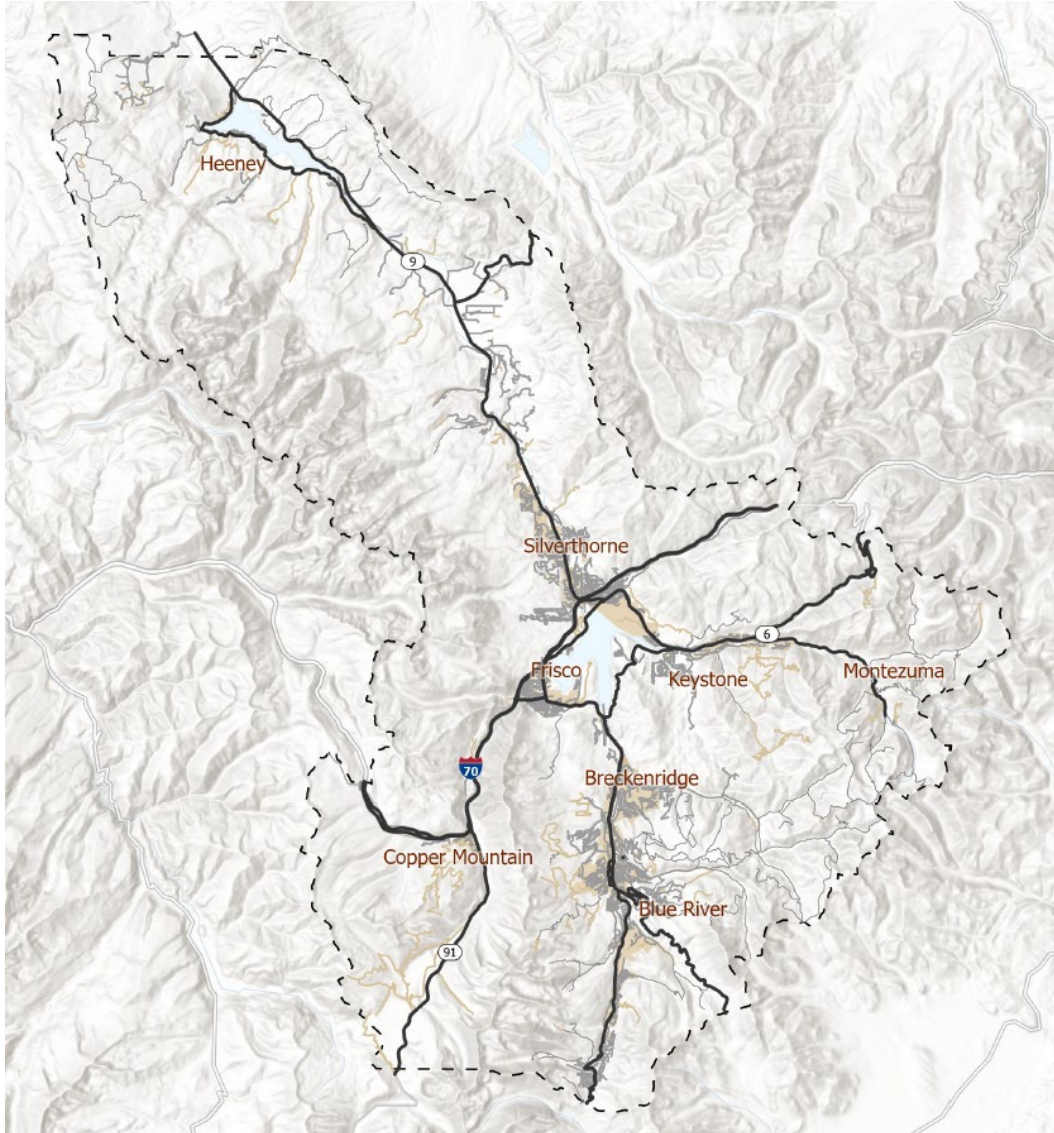
- Project Overview
- Expected Outcomes

HISTORICAL EVACUATIONS

- Ptarmigan Fire, 2021
 - 290 homes
- Buffalo Mountain Fire, 2018
 - 1,400 homes
- Peak 2 Fire, 2017
 - 400 homes



NEED FOR ASSESSMENT



- Limited Resources
- Limited Infrastructure
- Challenging Geography
- Fluctuating Population

NEED FOR ASSESSMENT

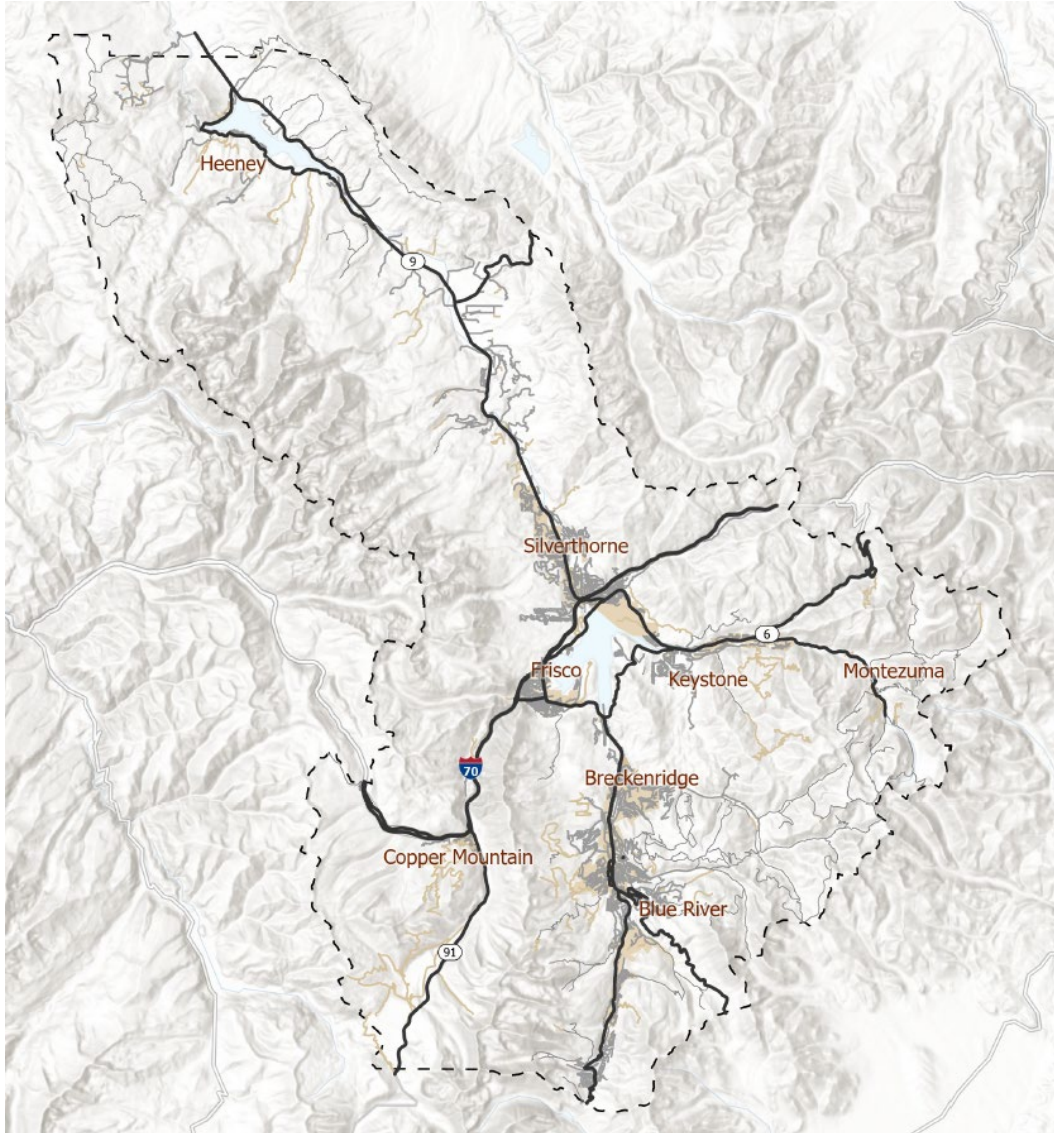


PROJECT OVERVIEW



Link to news segment shared during live presentation: https://youtu.be/HK_Vm2aRzzQ?si=0mWwMDIWxAuQFzLI

PROJECT OVERVIEW



- 18 months
- Comprehensive Planning Team
- Phased Approach:
 - Wildfire Modeling & Risk
 - Roadway Capacity
 - Vulnerable Populations
 - Shelter-in-Place Strategies
 - Public Notification

PROJECT OVERVIEW

- Community Feedback
 - Municipal & County Engagement
 - Social Media
 - Community Events



Please share any locations where you have concerns about evacuation congestion, lack of egress routes from your community, or other transportation-related concerns during an evacuation.

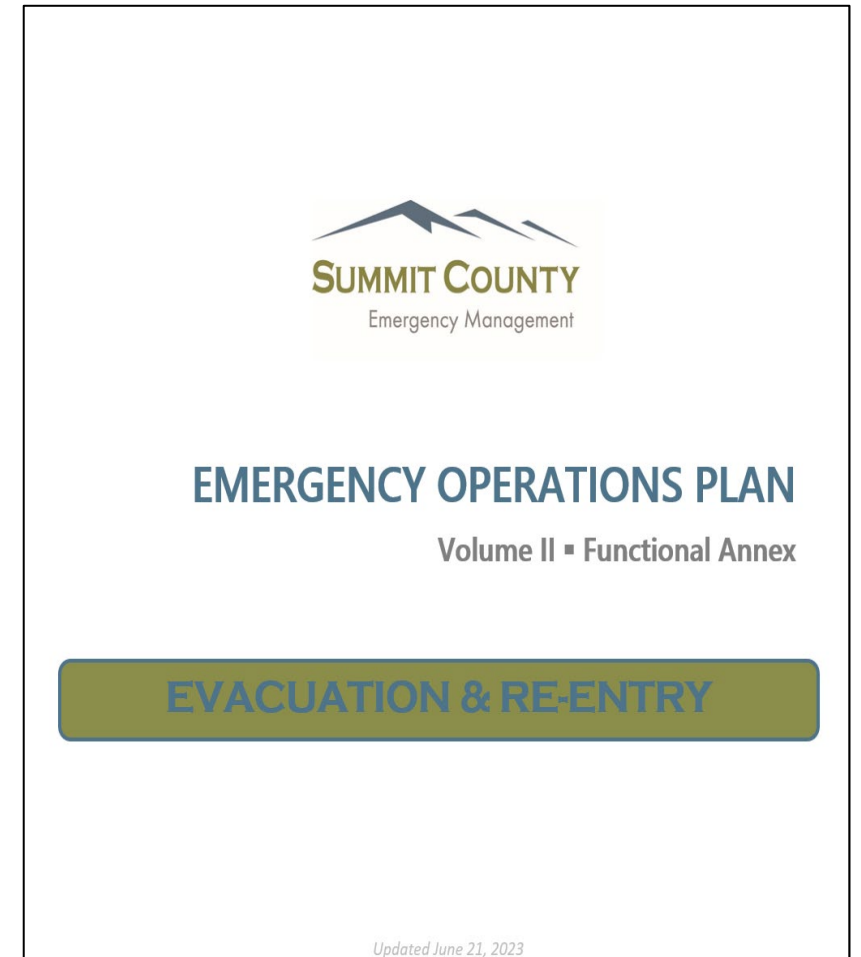
EXPECTED OUTCOMES

Intelligent strategy based on data from industry experts

- Accurate Clearance Modeling
- Traffic Pinch Points
- Use of Contraflow
- Emergency Ingress Routes
- Strategic Egress Routes
- Cascading Impacts
- Best Use of Existing Transit System
- Effective Service to Vulnerable Populations
- Maximized Personnel Deployments
- Pre-Positioned Equipment & Resources
- Early Public Engagement
- Emergency Alert & Warning Strategy
- Signage Strategy
- Infrastructure Enhancements

EXPECTED OUTCOMES

- Informed Procedures & Protocols
- Updated Policy
- Training & Education
 - Responders and Public



Brian Bovaird

Director of Emergency Management

Summit County, CO

970.409.7208

brian.bovaird@summitcountyco.gov