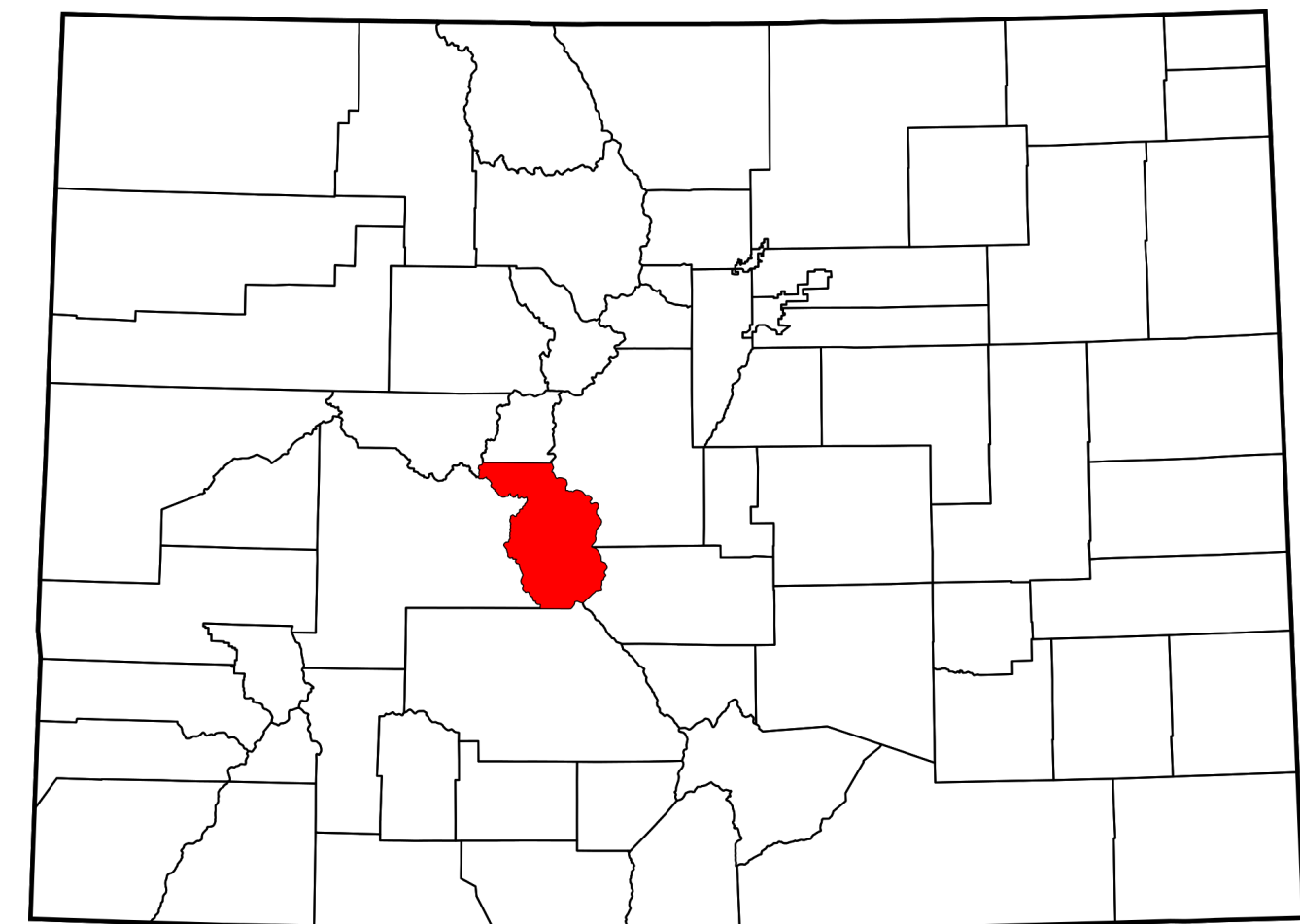


Building Community through Landscape Resilience

Chaffee Common Ground: Addressing landscape challenges for the community
*Chaffee County Commissioner Greg Felt, Salida Recreation Director Diesel Post &
Outreach Coordinator Kim Marquis*



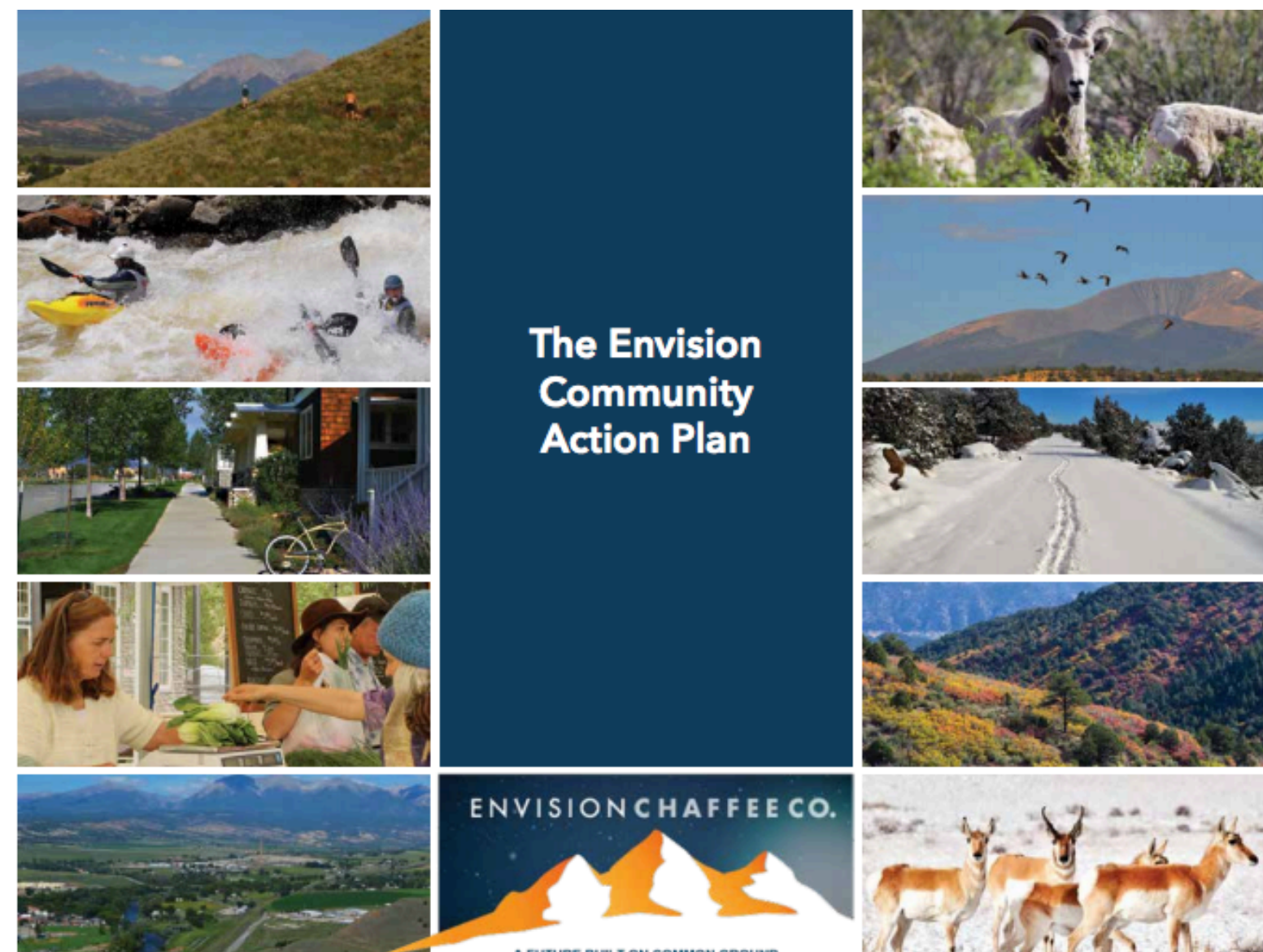




Healthy forests, waters & wildlife

Sustainable agriculture & rural landscapes

... in balance with growth in recreation



Conservation finance measure

- 0.25% sales tax
- Forest Health & Wildfire Resiliency
- Sustainable Agriculture
- Recreation Impacts Management
- Commitment to leveraging our investment

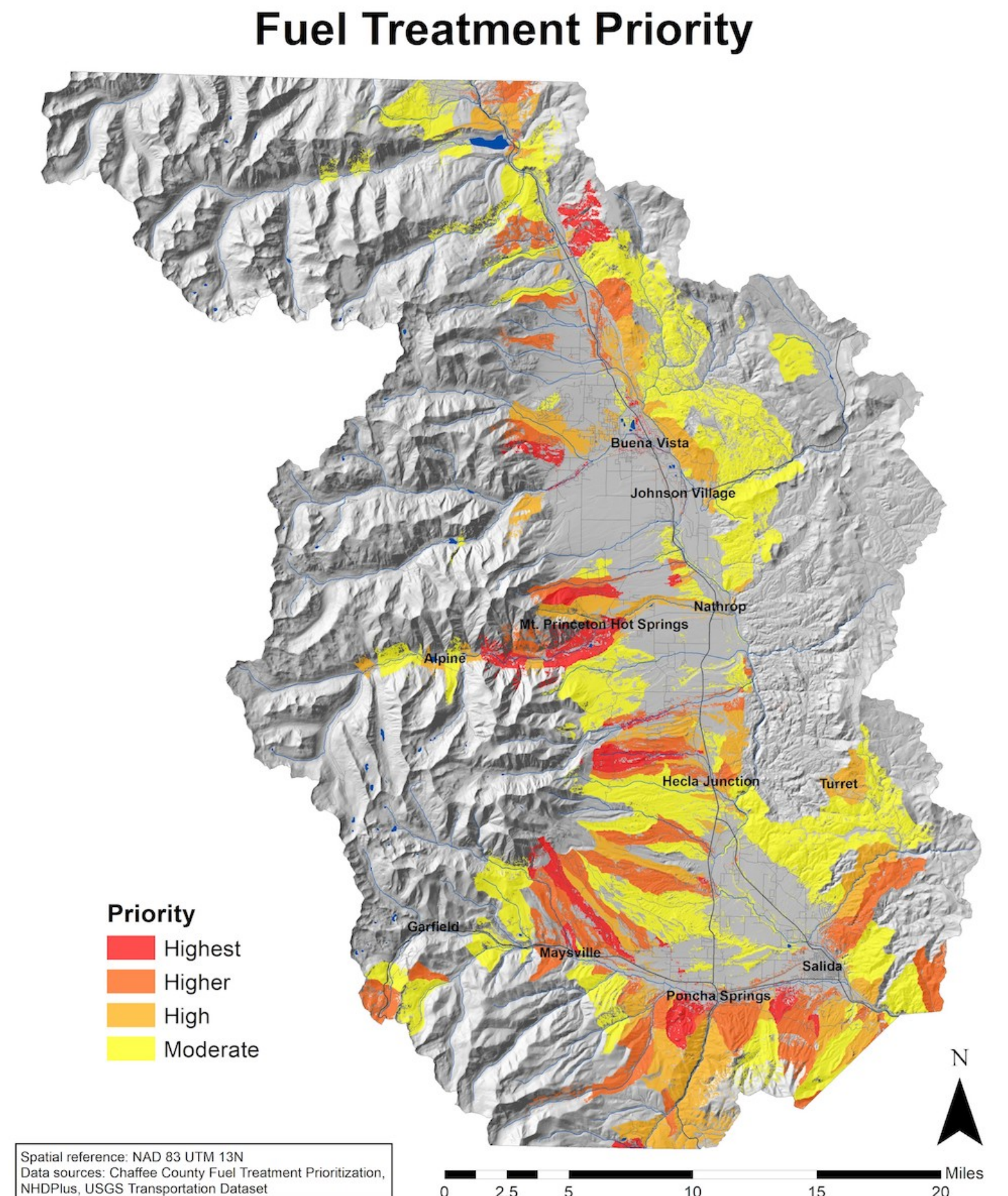


Support
what you
Love
about
Chaffee
County!

Vote **YES** ✓
for Protecting Forests,
Waters and Working Lands!

Community Wildfire Protection Plan

- Inclusivity: 44 individuals from 20+ organizations
- GIS layering and defining community Values at Risk
- “Bang for the Buck” map
- Treat 5% of the landscape for 50% risk reduction
- 30,000 acres in 10 years







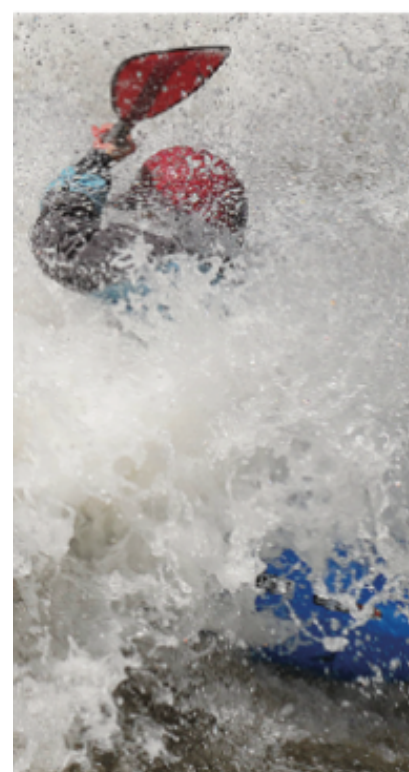
National Forest Foundation



A FUTURE BUILT ON COMMON GROUND

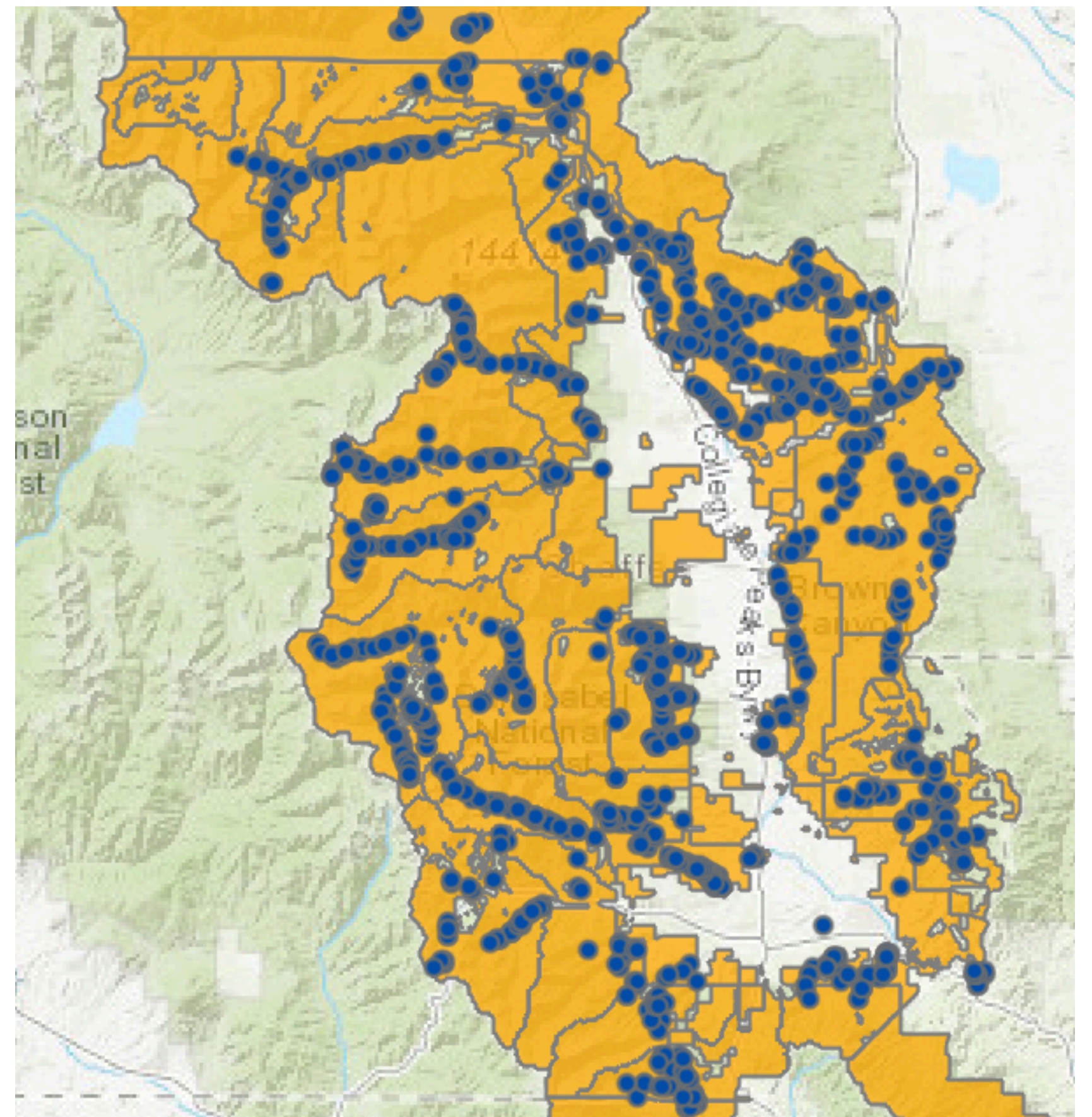
Chaffee Rec Management Plan

- Protect natural resources, quality experiences & economic benefits of tourism
- Keep the outdoors Clean, Fun & Wild, now and for years to come
- Raised \$3.5M in 1st year; hired 14 new staff











Leveraging Community Investment

- \$5.9M leveraged to \$24M in value by 2026
- Grants to 28 local groups for 50 different programs and projects
- 60% for Forest Health, 32% for Sustainable Agriculture and 7% for Rec Management





Investing in Forest Health & Wildfire Resilience

In 2021, Common Ground invested \$1,640,000 in the Upper Arkansas Forest Fund, developed to accelerate forest treatments as outlined in the Chaffee County Community Wildfire Protection Plan. As the Congressionally chartered partner of the U.S. Forest Service, the fund's National Forest Foundation (NFF) manages on-the-ground projects that reduce wildfire risk and improve forest health and wildlife habitat.

The NFF has worked in Colorado for nearly 20 years. It chose the Upper Arkansas River Basin because of strong community support for reducing wildfire risk. Chaffee is one of only a few communities in the West to vote for public funding of forest restoration projects. "The tax proves a local commitment to this work," said Marcus Selig, vice president of field programs for the NFF.

Selig is a Salida resident and member of the Envision Forest Health Council, a group of 35 leaders implementing the community wildfire plan by collaboratively planning and funding 30,000 acres of treatments to cut the risk wildfire poses to community assets by half in a decade. The plan shows that cross-boundary work on both public and private lands is needed to meet this goal, as one-third of the treatment priority areas are privately owned. Treatments include thinning trees, low-intensity prescribed fire and mastication — a patch-clearing method used in the piñon-juniper forest.

By leveraging \$3.2 million from the Common Ground Fund, the Forest Health Council has raised more than \$12 million in less than two years for community wildfire resiliency such as a strategically placed fuel break on Methodist Mountain (see story on page 10), and programs like Chaffee Chips and Chaffee Treats, which connects large-scale private and public land treatments to be financed by the Upper Ark Forest Fund.

