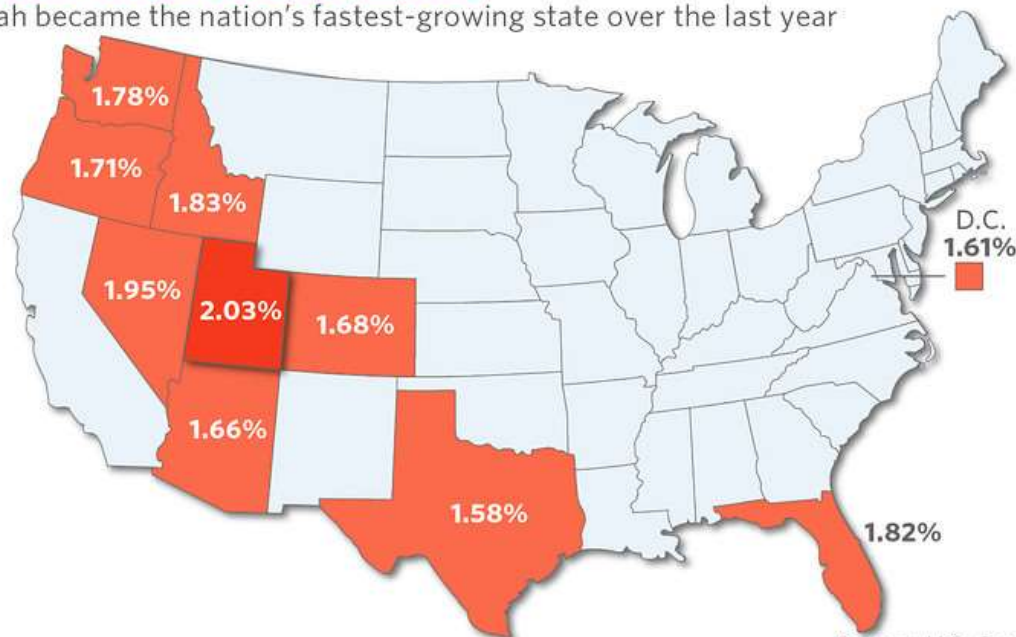




Park City Municipal

THE NUMBER ONE

Utah became the nation's fastest-growing state over the last year



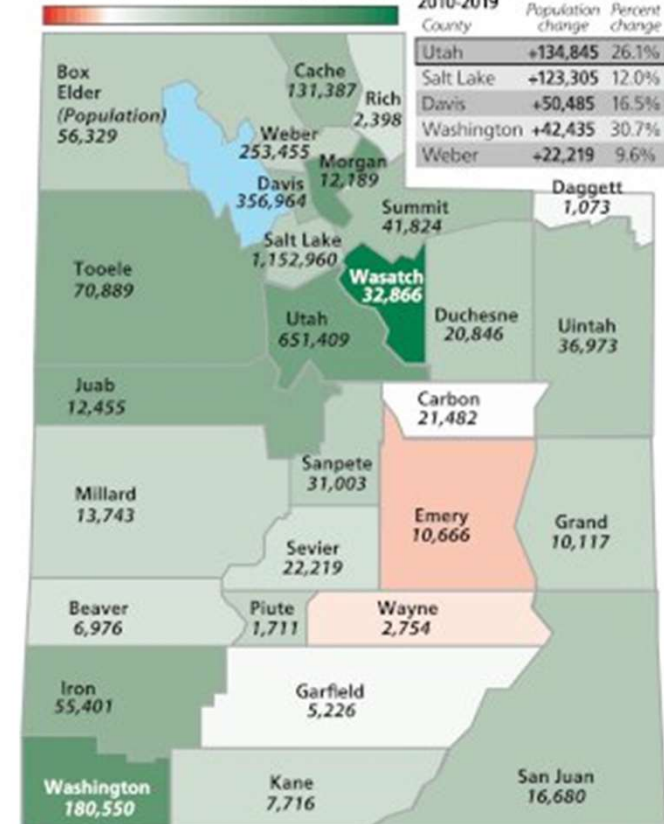
Source: U.S. Census

State powerhouse for growth this decade: Utah County

Utah County's population grew by 25% this decade, and added more people than Salt Lake County.

Percentage change 2010-2019

-10% 0% 10% 20% 30% 40%



Source: Gardner Policy Institute, University of Utah
GRAPHIC BY CHRISTOPHER CHERRINGTON | The Salt Lake Tribune



Utah leads as the fastest growing state in the U.S.*

Percentage increase in population, 2010-2020

1. Utah	18.4
2. Idaho	17.3
3. Texas	15.9
4. North Dakota	15.8
5. Nevada	15.0
6. Colorado	14.8
7. District of Columbia	14.6
8. Washington	14.6
9. Florida	14.6
10. Arizona	11.9

**Ranking includes District of Columbia*

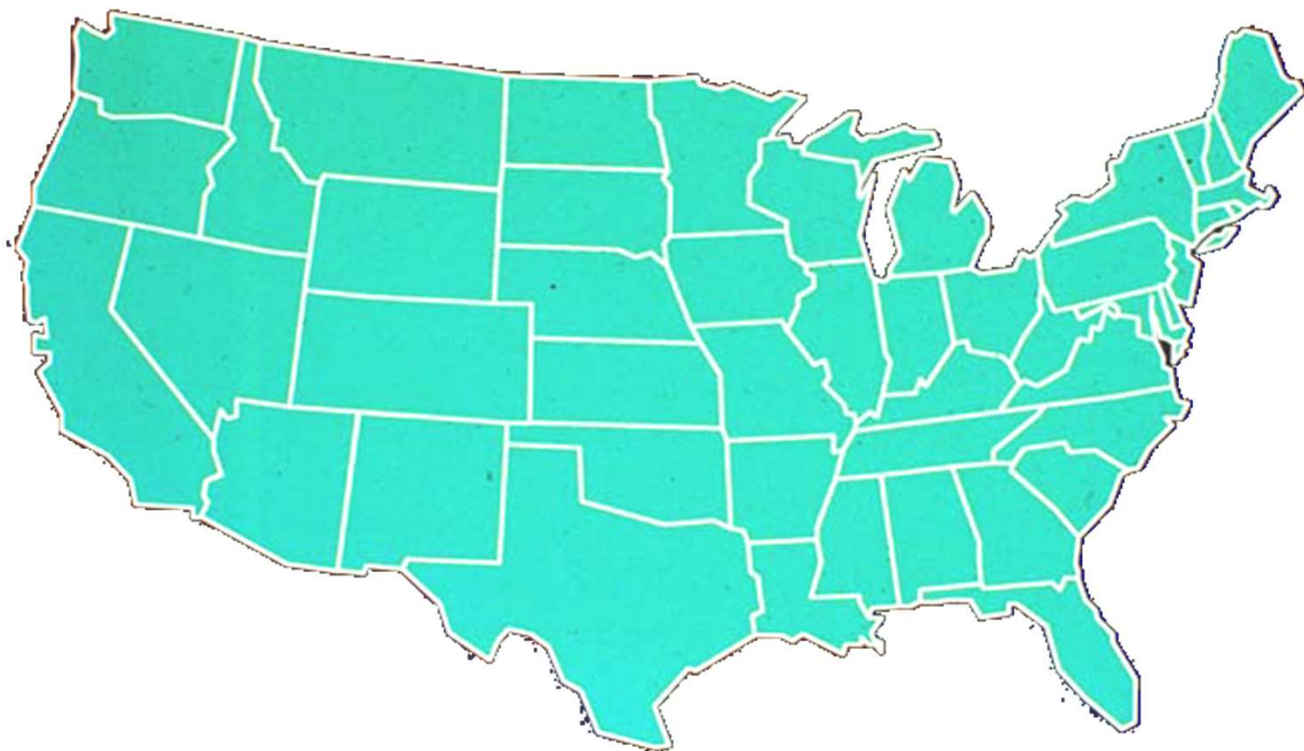


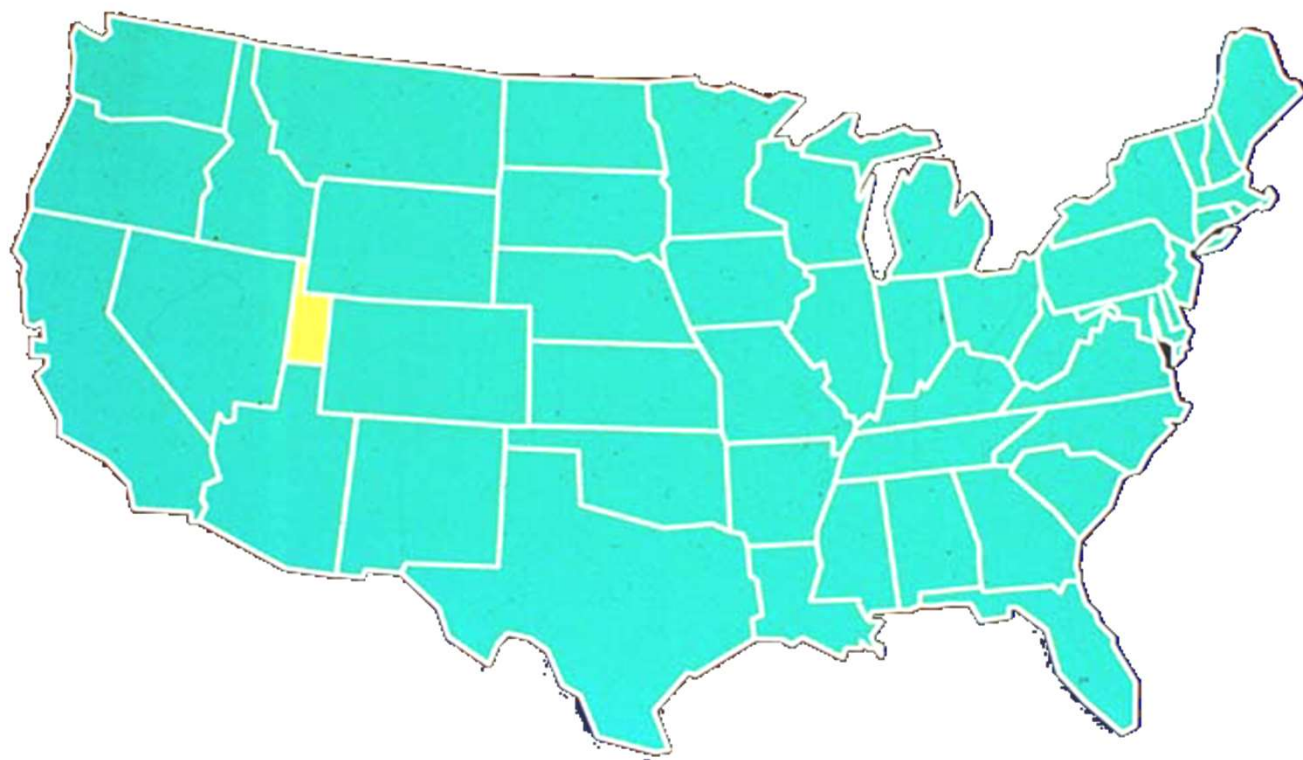
SALT LAKE 2002



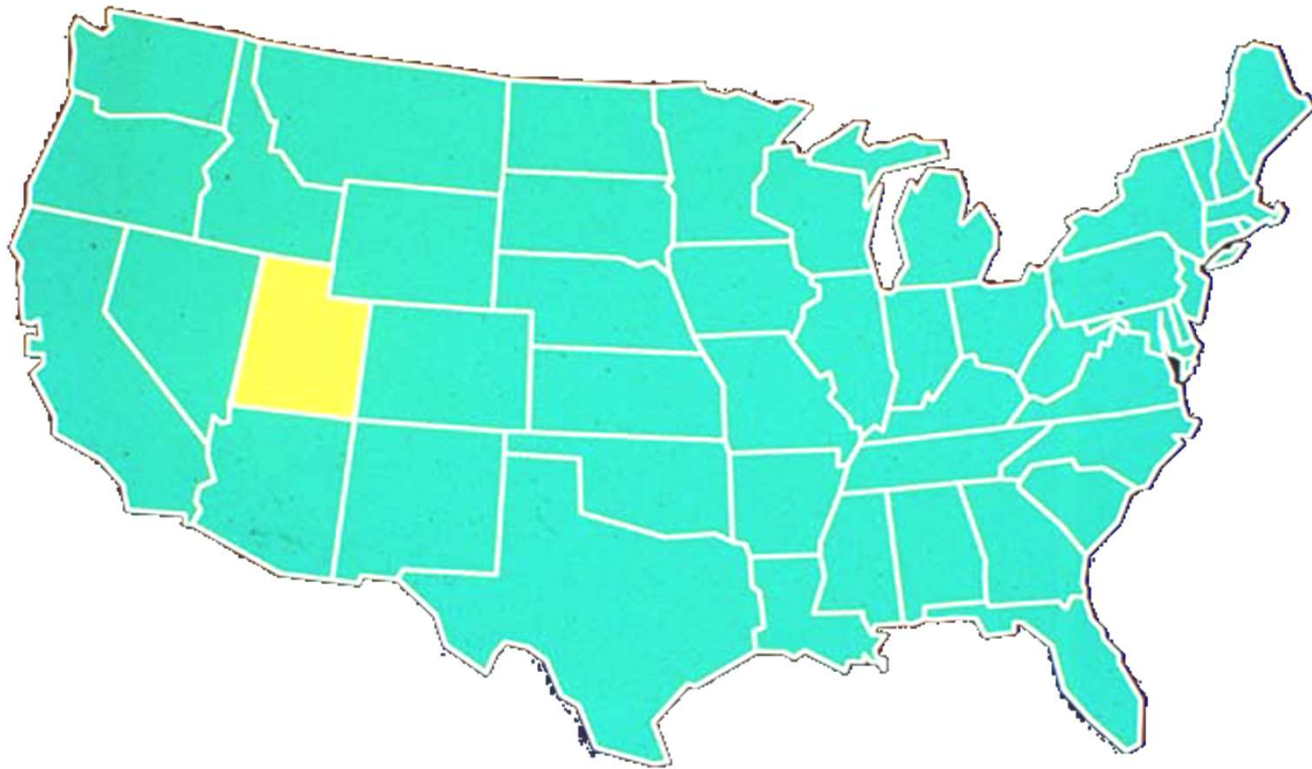

 What the Silicon Slopes is & Why it Matters to Utah Workers







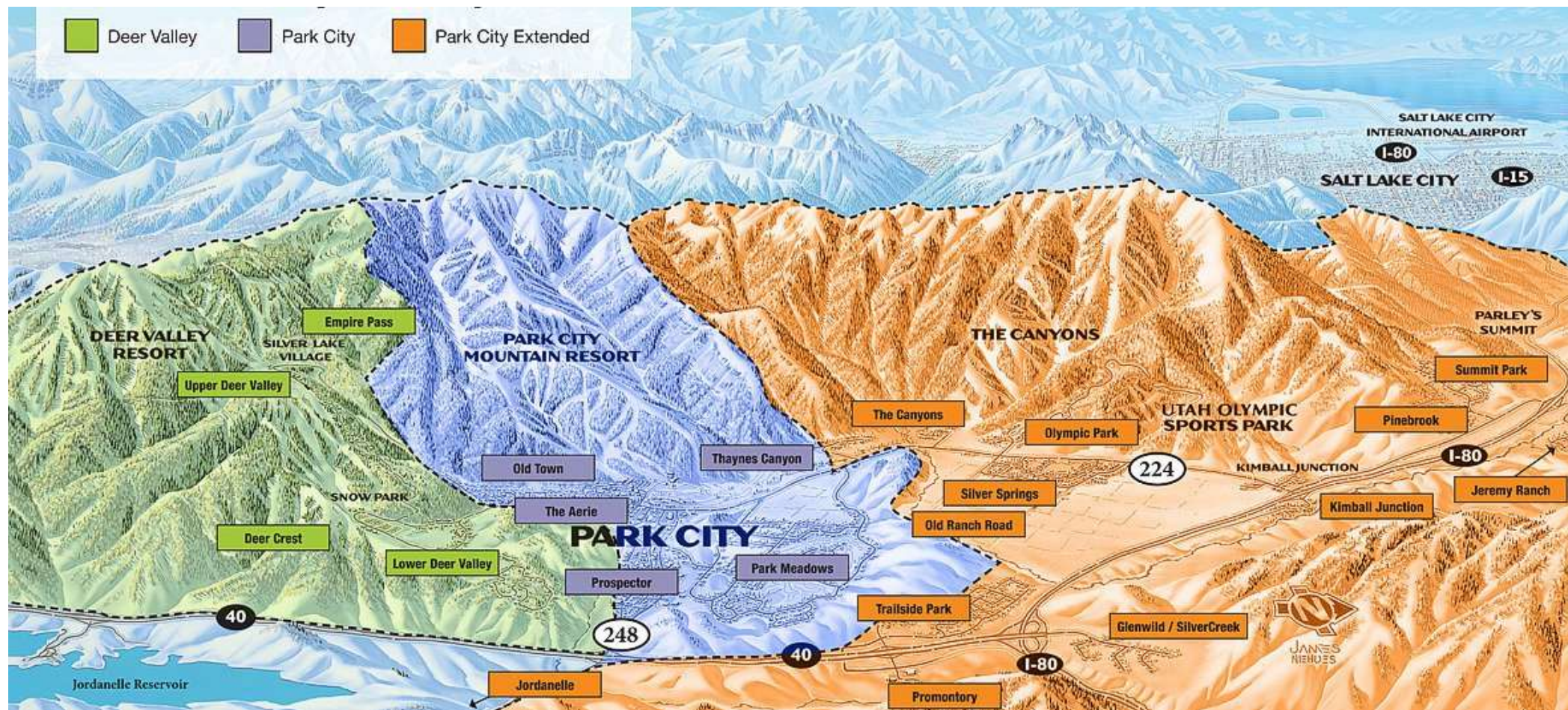
UTAH

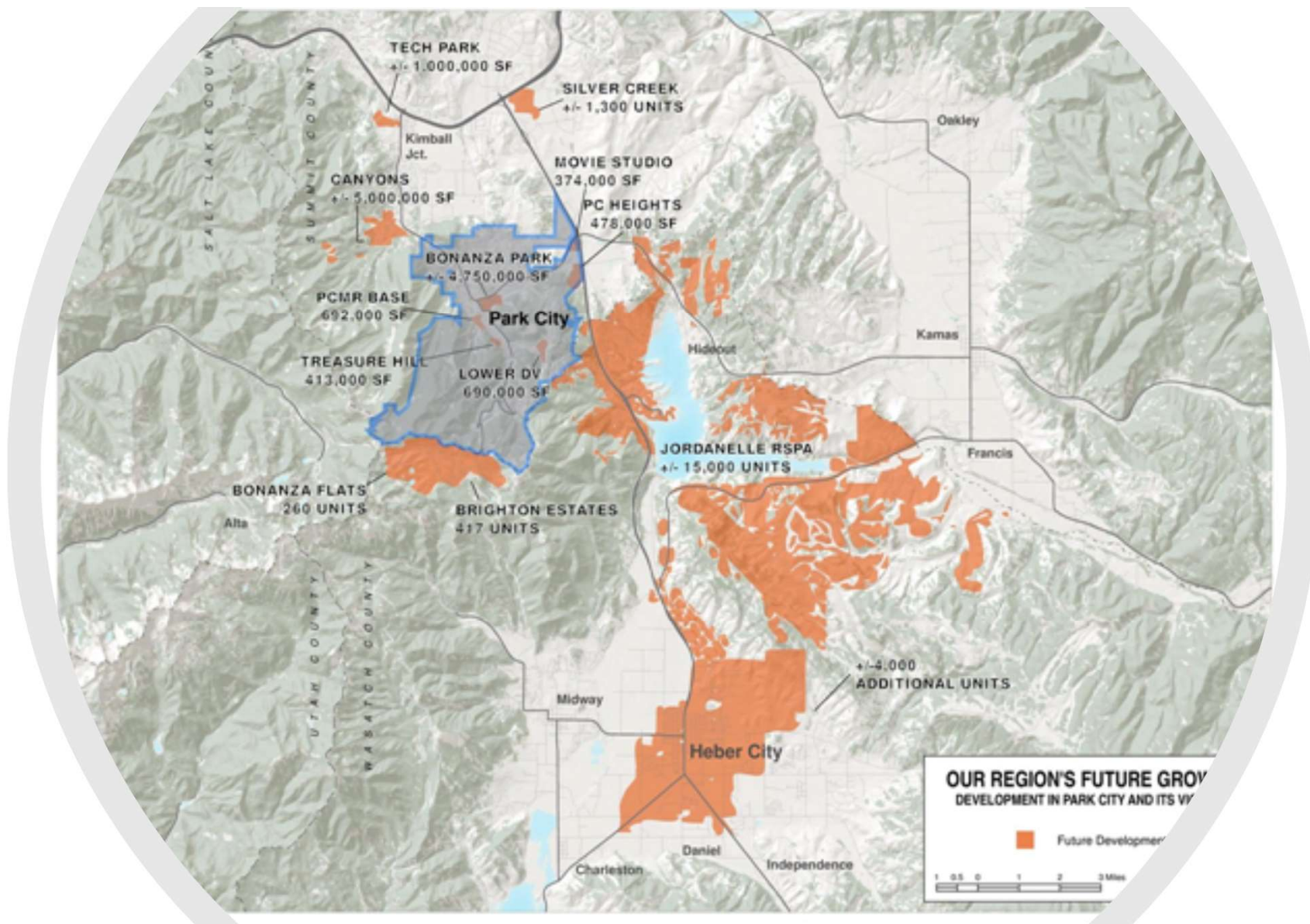




- Median single-family in PC rose **37% to \$2.75 million**.
- Condo up (66%) in units and median price up 14% to \$702,000.
- Overall land sales in Summit and Wasatch counties were up 129%.
- The average market listing time has dropped to just 45 days.

Deer Valley Park City Park City Extended



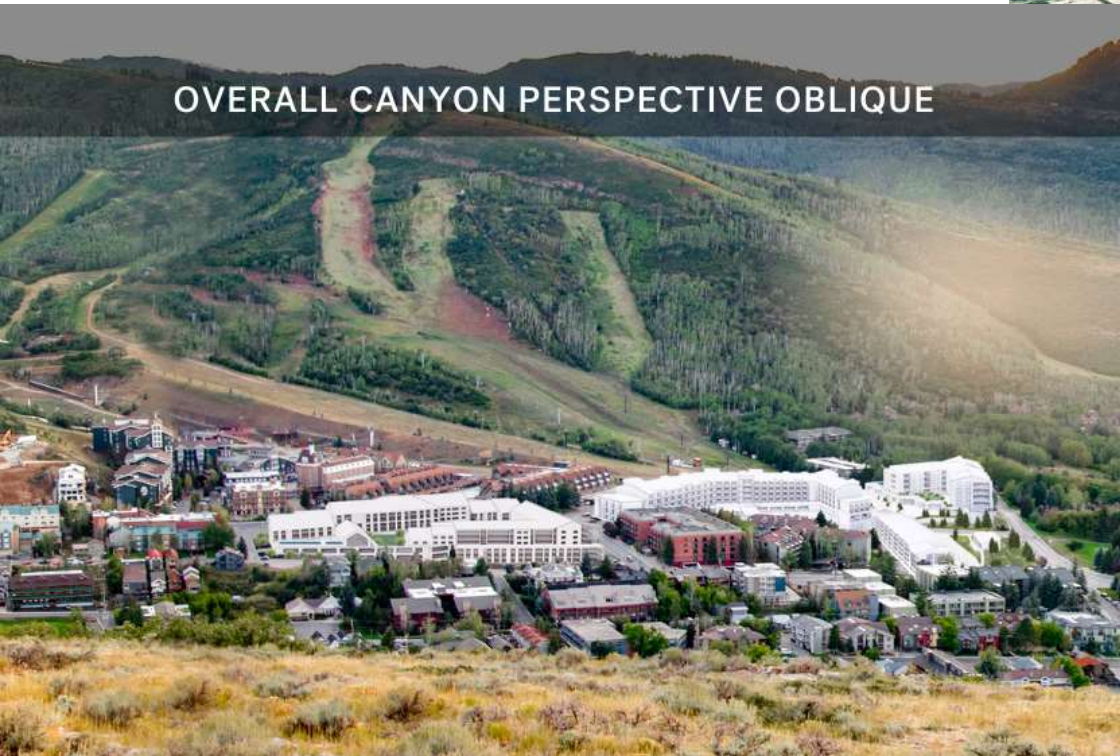


Park City

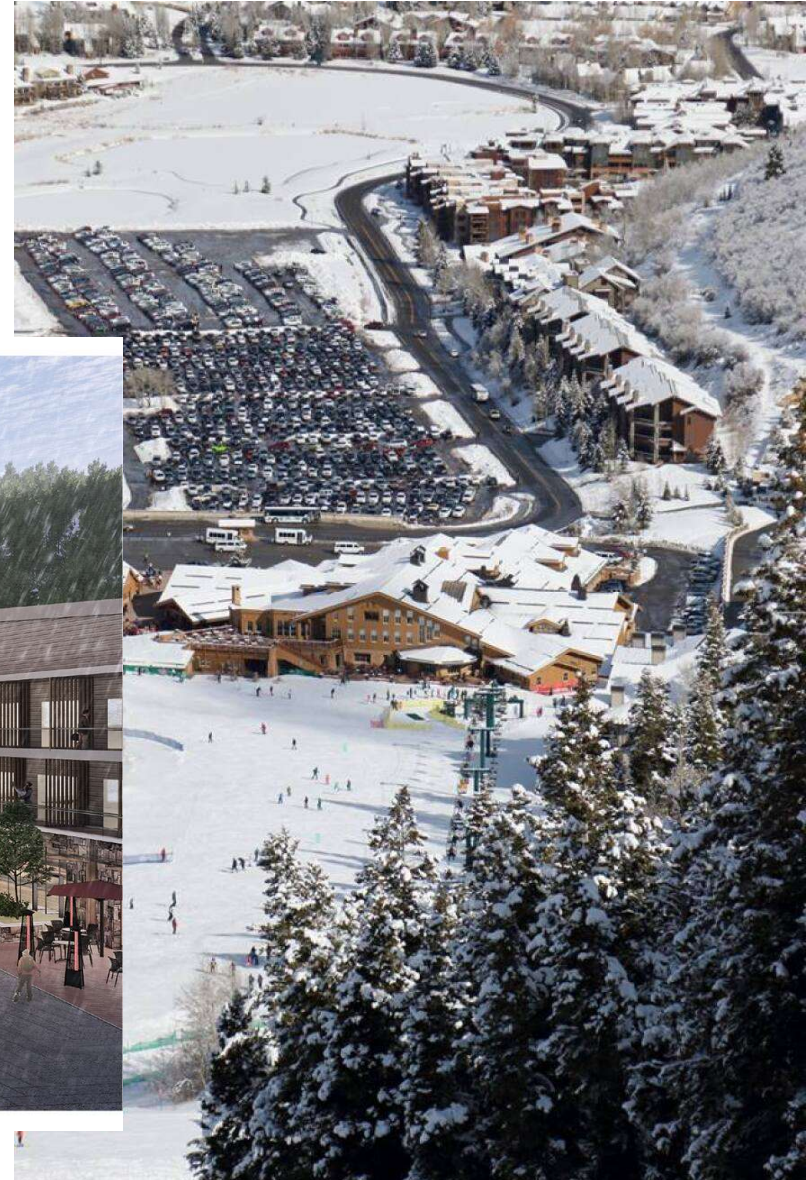




Park City Mtn. Resort



Deer Valley Resort



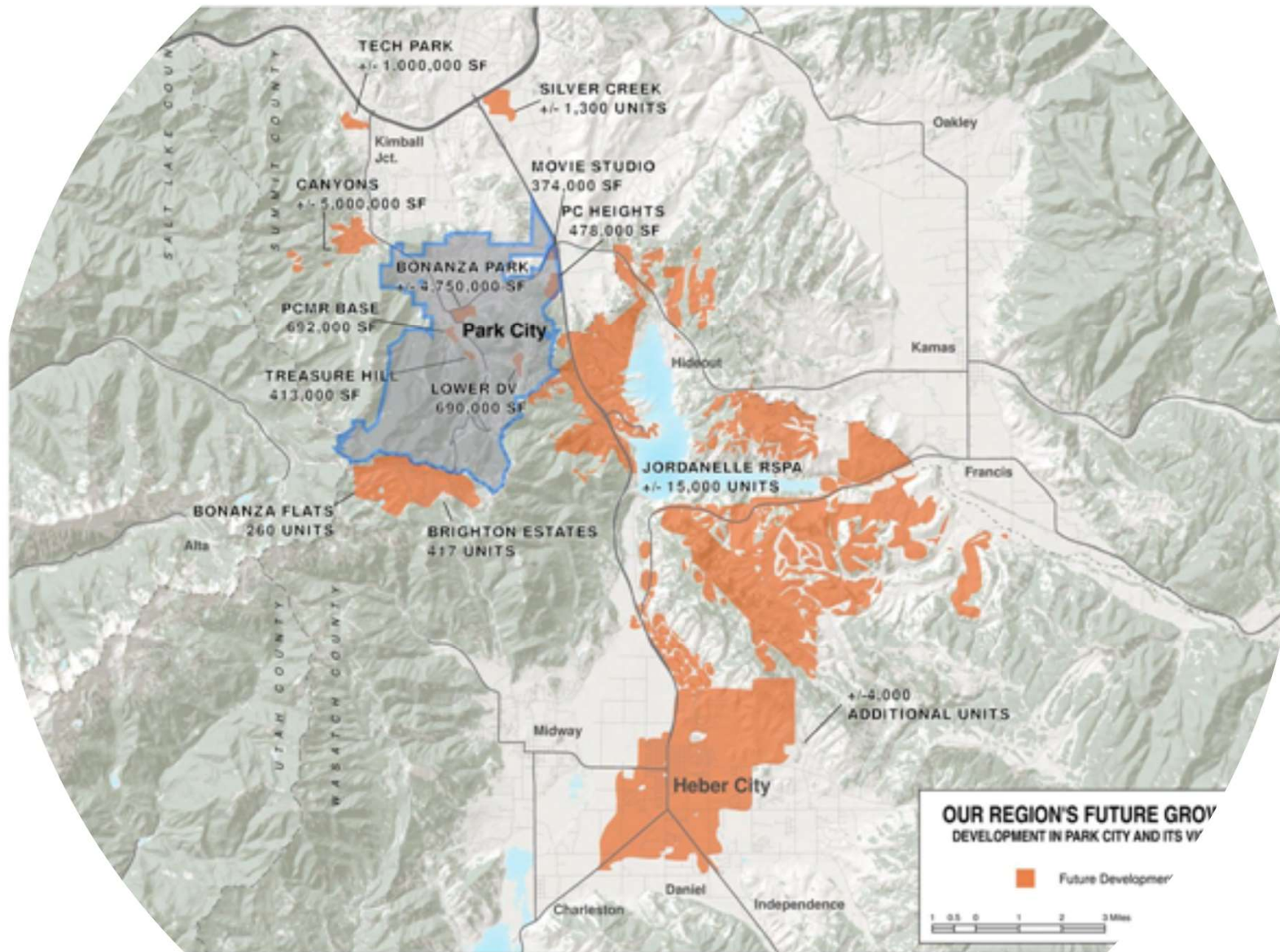
Langvardt Design Group



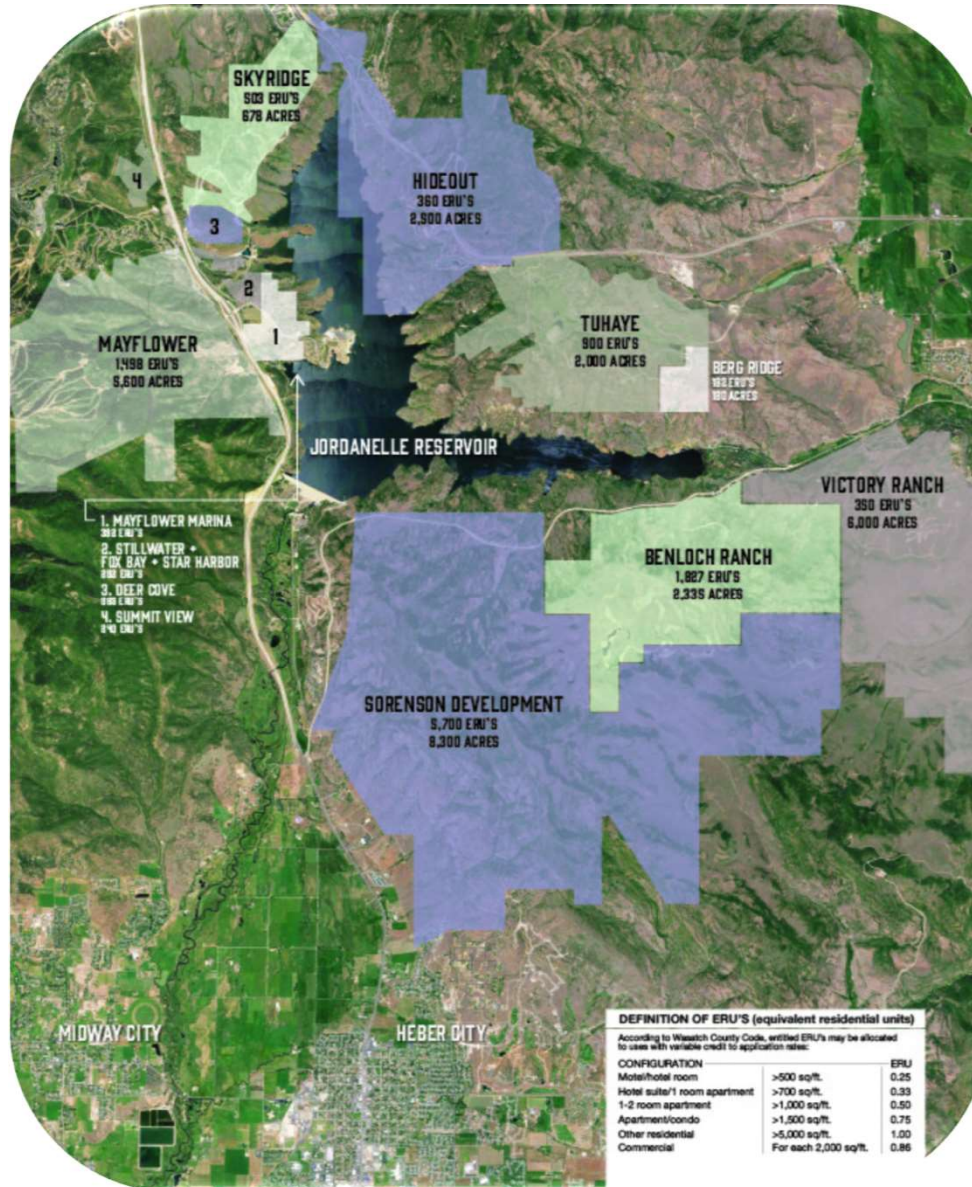


Canyons Resort



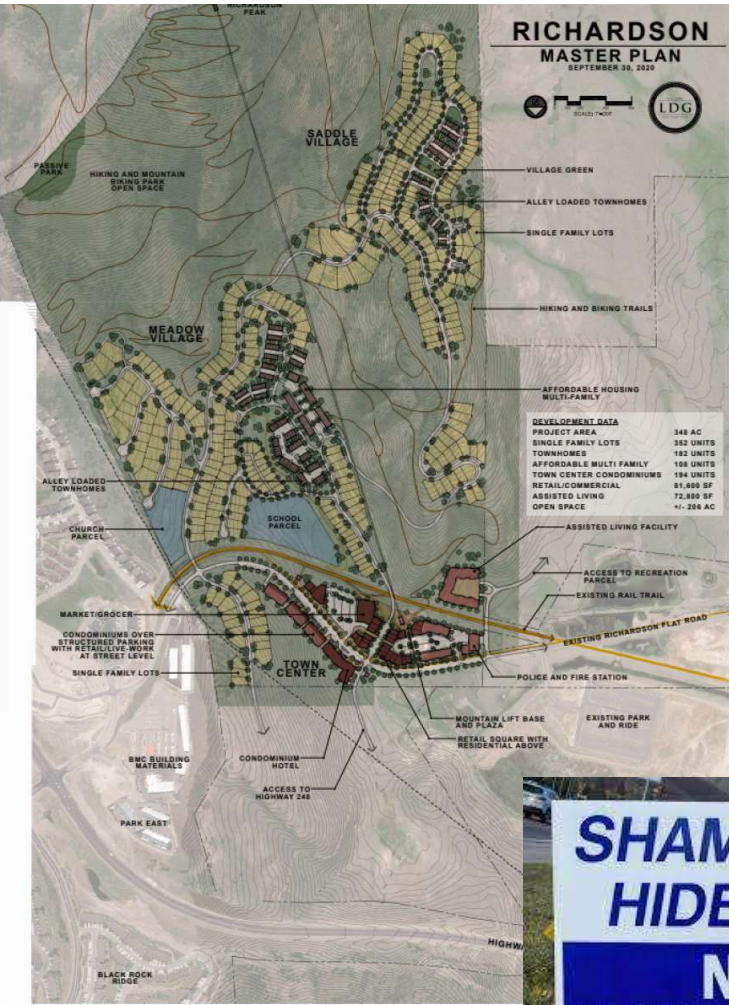




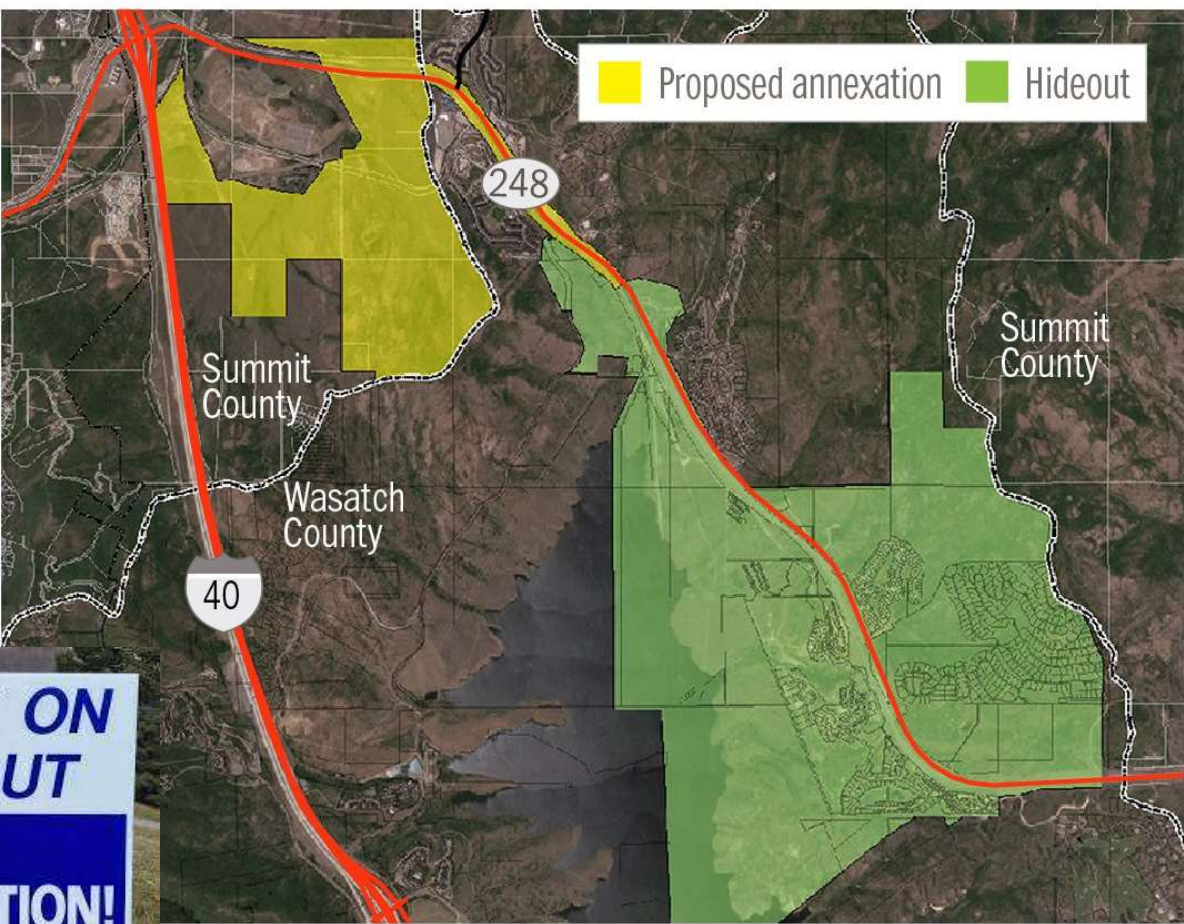


MAYFLOWER & MIDA





Town's leaders want to annex about 650 acres of land for commercial development

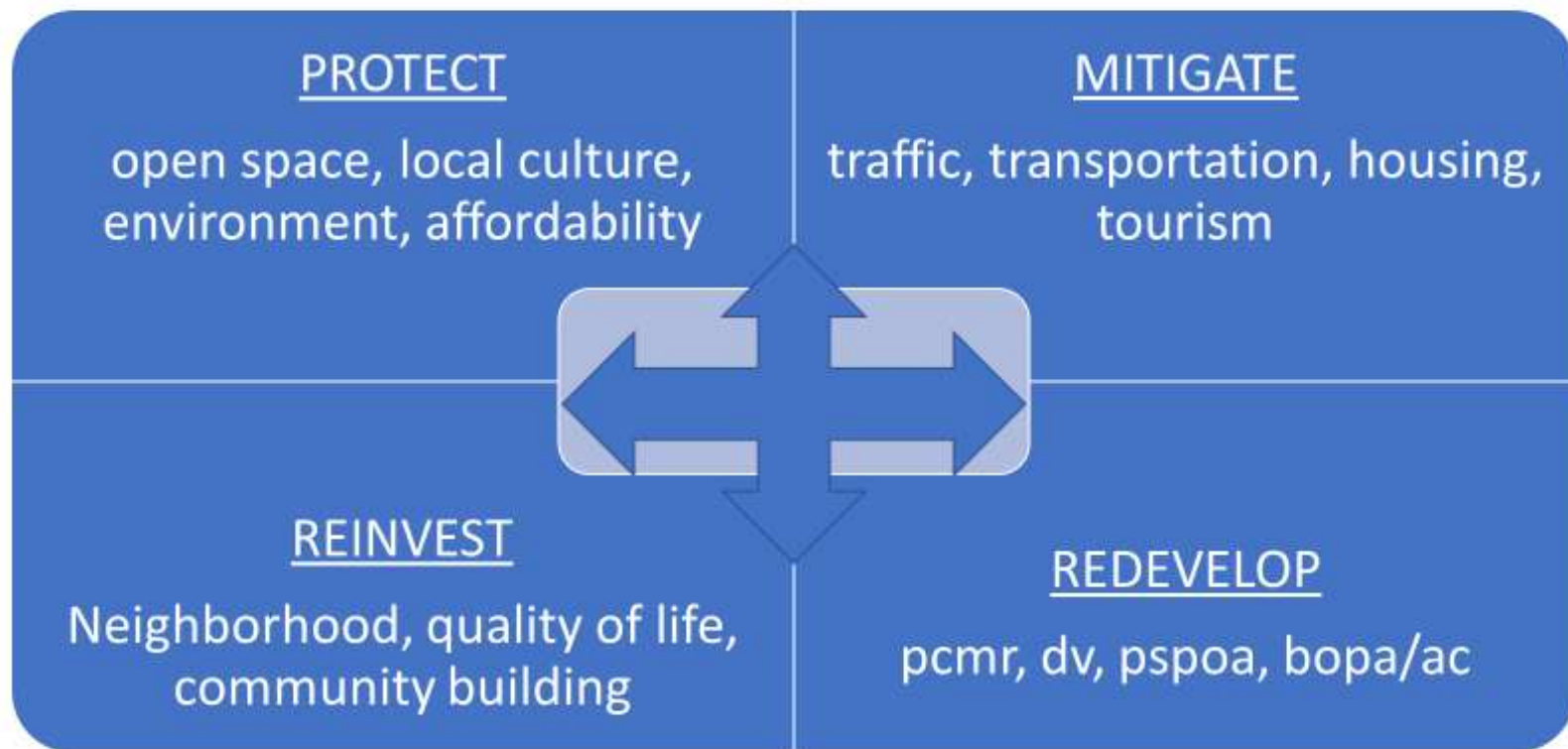


**SHAME ON
HIDEOUT
NO
ANNEXATION!**

it County

Deseret News

Community Toolbox



PC Vision 2020 Pillars – *Bold* Action...

- Sustainability, Transportation, Housing, Affordability/Equity, Local Culture
 - Major infrastructure investments ahead
- Must harness change and benefit from in-town growth
 - Transactional, exchanges, subsidies, financial leverage
- Today's decisions guide tomorrow's capacity to fund and sustain community balance
- Regional planning, services, and relationships critical
- Collision of Wasatch Back & Wasatch Front

Discussion

- Parking - To park (it) - or not to park (it)?
 - Inside town, outside town, or both?
 - Unique to PC?
 - PCMR, DV, Main Street
- Housing - Community Housing – inside town, outside town, or both?
 - City as developer?
 - PPP's?
 - Land, land use process, code exceptions?
- Property - Conservation Easements or maintain flexibility?
 - Open space in perpetuity or only for now?



Park City Municipal