



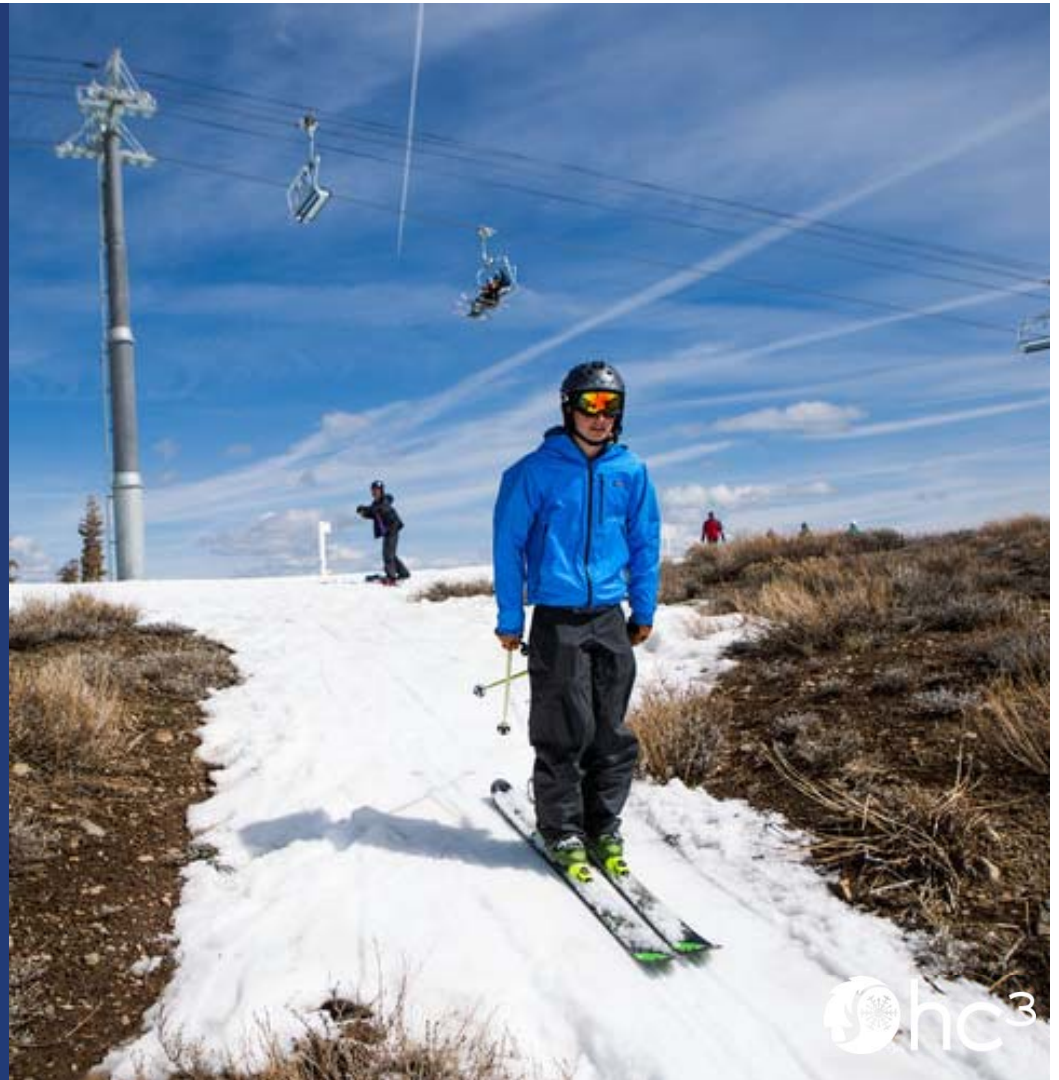
Summit Community Climate Action Plan

Colorado Association
of Ski Towns
August 23, 2019



Why a Climate Action Plan?

- Colorado is one of the fastest-warming states in the country
- If we do nothing...
 - Breck will be the new Eagle
 - Only 43% of wintertime precipitation will fall as snow in the Upper Colorado watershed



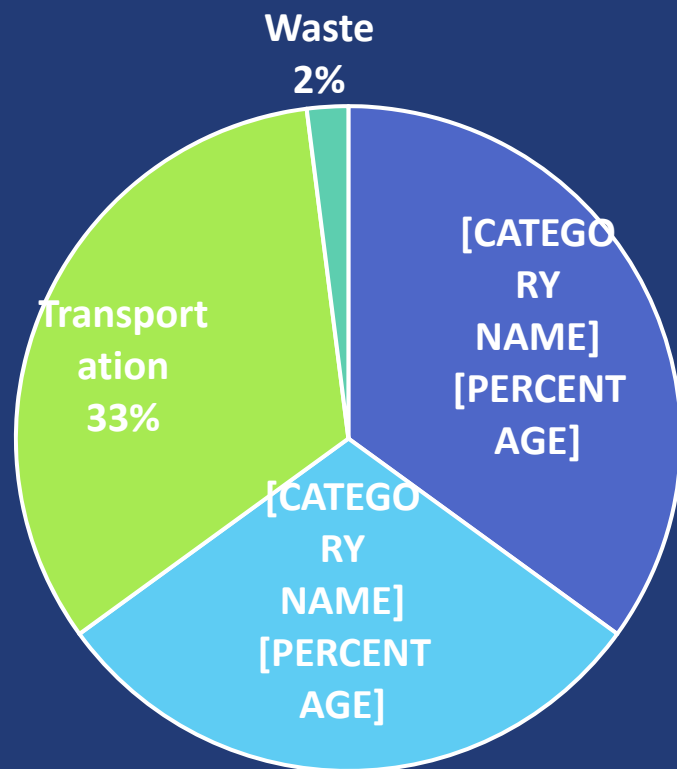


Climate Action Plan

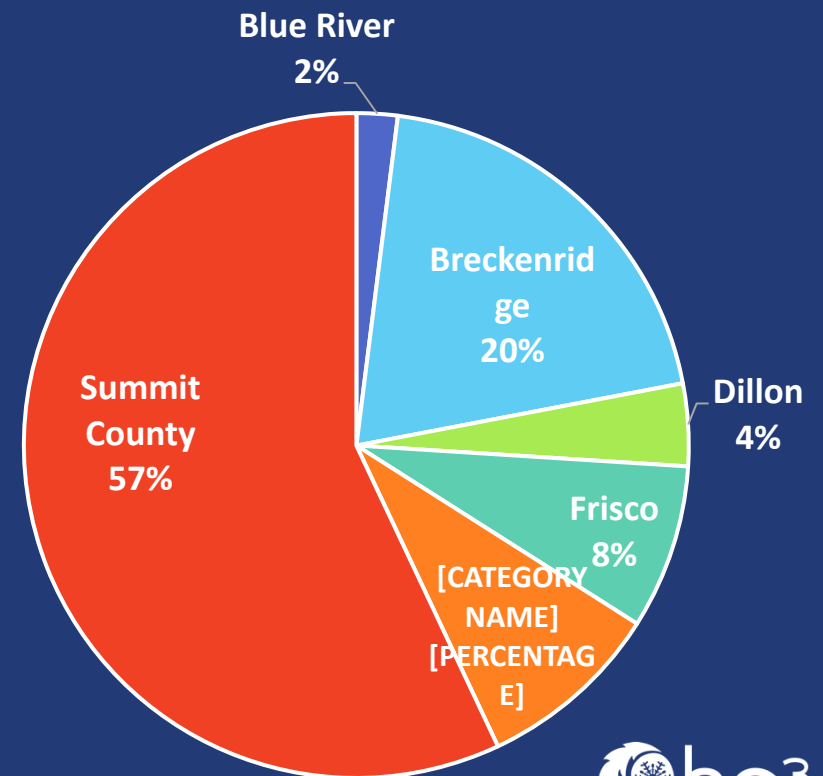
- Partners
- GHG Inventory Results
- Goals and Strategies
 - Renewable energy
 - Building energy
 - Transportation
 - Waste
 - Forests
 - Community Engagement



Summit County GHG Emissions



GHG Emissions by Town

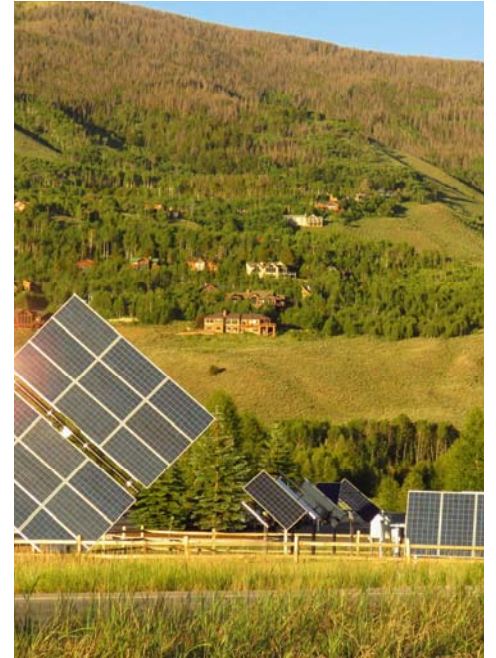


Climate Action Goals

Reduce
countywide
emissions...

50% by 2030
80% by 2050





CAP Strategies & Impacts



Solarize Success:
66 contracts signed
435 kW
= 62 homes 100%
offset



Renewable Energy

- Support more local renewable energy

and...

- Support Xcel Energy's plans to develop more renewable energy

Building Efficiency

- Develop codes to make new buildings more energy efficient
- Create programs and incentives to make existing buildings more efficient
- Explore opportunities for transitioning away from natural gas

Stretch building codes could increase efficiency up to 20%





Summit County
only has **49**
electric vehicles
currently
registered

Transportation

- **Expand EV charging infrastructure across the county**
- **Help facilitate fleet conversions to EVs**
- **Promote alternative transportation to visitors**

Waste

- Develop Silverthorne recycling center
- Launch free food scrap recycling program
- Mattress and carton recycling
- Install glass depots at more locations around the county

Summit's
waste
diversion rate
= 20%



Forests

Forests store
10% of Summit
County's
emissions



- Improve understanding of forest health in a changing climate
- Educate the community about the benefits of healthy forests



Community Engagement

- Create an outreach campaign to engage locals and visitors
- Provide free workshops to help locals reduce carbon footprints
- Leverage partnerships with local governments, ski areas, school district and CMC

What makes our plan unique?

1. One plan for the whole community
2. Stakeholders from multiple jurisdictions/interests collaborating on implementing strategies
3. Utility support and participation



HIGH COUNTRY
CONSERVATION CENTER

Thank you!

Jess Hoover

Climate Action Director

jess@highcountryconservation.org