



**LET'S GO,
COLORADO**
YES ON 110

Find us at:
letsgocolorado.com

THE PROBLEM

We all agree.

Colorado has roads, bridges, transit and multimodal systems in dire need of capital investment.



IN 1991...

- **George H.W. Bush was President**



- **Ford Pintos were still around**

- **Smartphones didn't exist**



IN 1991...

» Colorado set the gas tax to **22 cents per gallon**

» Colorado spent **\$126 per driver** on transportation

» Colorado's population was **3.4 million people**



IN 2018...

» Colorado's population is
5.6 million people

» We spend **\$69 per driver**
per year

» **\$9 Billion** in statewide
transportation projects

» Colorado Municipal League
estimates additional **\$3 Billion**
in needed project funding +
\$750 million in maintenance

And... Gas Tax is still 22 cents per gallon

A STATEWIDE PROBLEM - A STATEWIDE SOLUTION

A Decade of Statewide Conversations

- » Local Elected Officials
- » Business Community
- » Environmental Community
- » Multimodal Advocates
- » Urban and Rural Stakeholders
- » Labor Groups

Key Components Required

- » Statewide Solution
- » Meets both State and Local funding needs
- » Provides resources for multimodal solutions

TOURISTS PAY THEIR FAIR SHARE

Nearly **40 million out-of-state tourists** visit Colorado annually. That's wear and tear on our transportation system. #110 makes sure they **pay their share** for critically needed improvements to our roads and bridges.



6¢ ON A \$10 PURCHASE



\$767 million

First year, statewide revenue from sales tax

\$6 billion

Bond principal for state projects

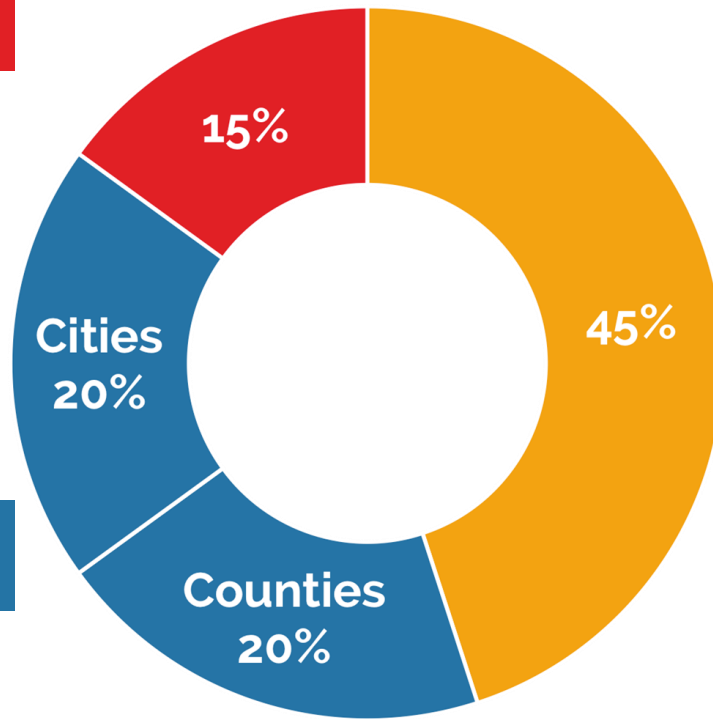
20 Years

This tax will sunset after 20 years

- Raises enough to address the problem
- Essential items like groceries, medicine and utility bills are exempt
- Everyone pays the same rate, including tourists

SYSTEMWIDE IMPROVEMENTS

Multimodal Transportation
Options Fund



State Highway Fund

Local Transportation
Priorities Fund

STATE



Reduce Congestion and Improve Infrastructure by widening lanes, adding passing lanes, improving interchanges, and creating alternative modes of transportation

Improve Safety by adding or widening shoulders, replacing bridges and building wildlife crossings

LOCAL



Fully Flexible Funds allocated to every city and county to support projects, such as:

- Street or intersection improvements
- Transit infrastructure or operating
- Sidewalks, pedestrian bridges or bike lanes

MULTIMODAL



Projects at the **State and Local Level**, including a match program for local communities.

Projects could include:

- Bustang
- Regional bike and pedestrian paths
- Dial-a-rides
- Disability services

STATE PROJECTS



Address CDOT's strategic priority investment program - **107 projects**

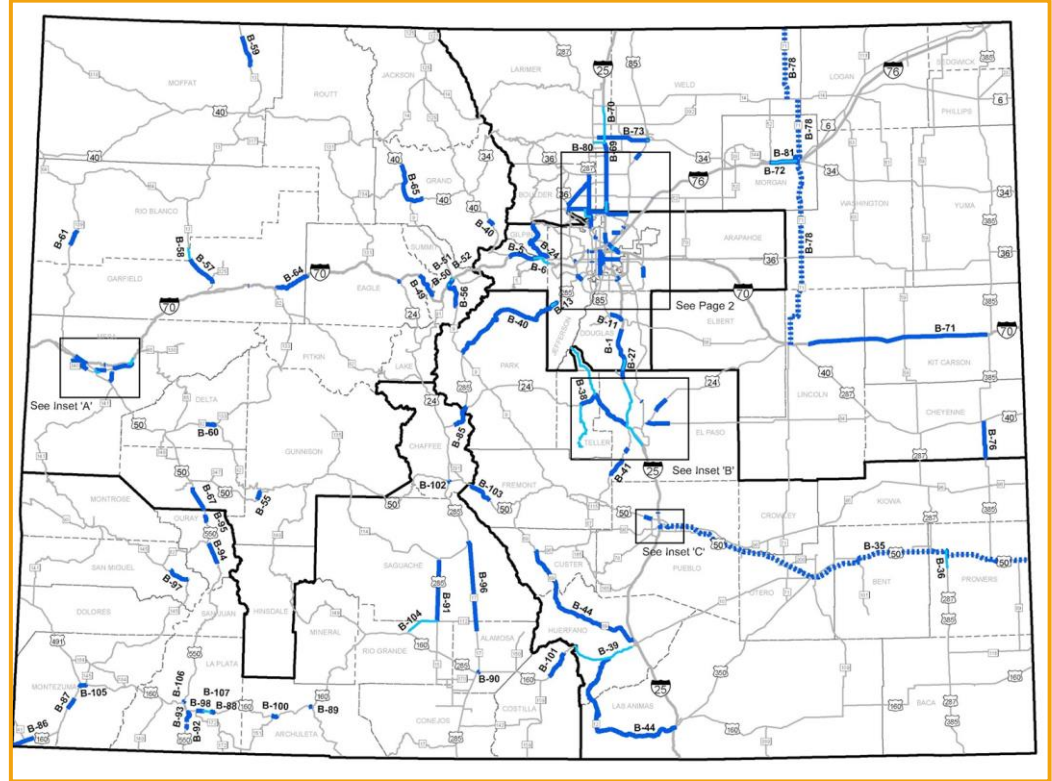


Bond against new revenue to immediately start critical projects

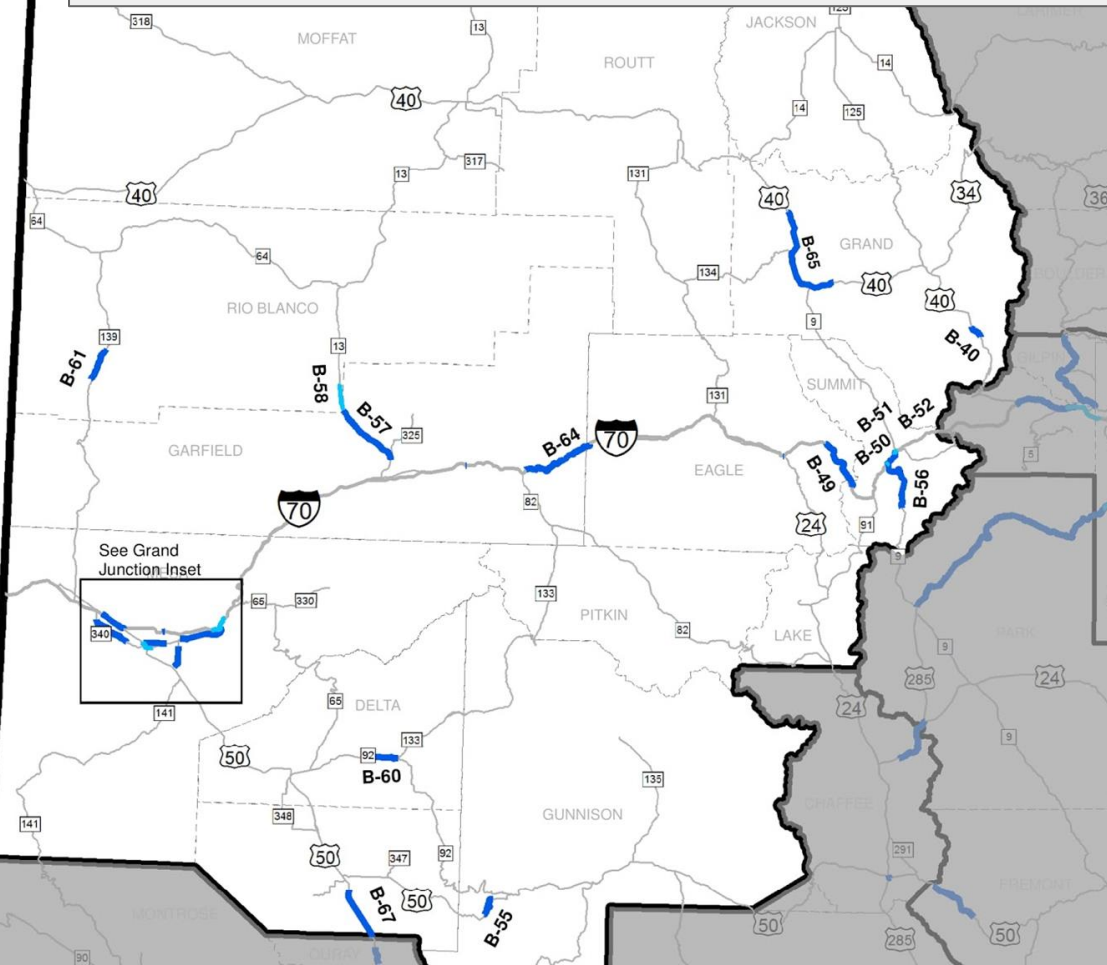
11 CDOT Commissioners' Districts

5 CDOT Planning Regions

1. South Denver Region
2. Colorado Springs and Southeast Region
3. Western Slope Region
4. Northeast Region
5. Southwest Region

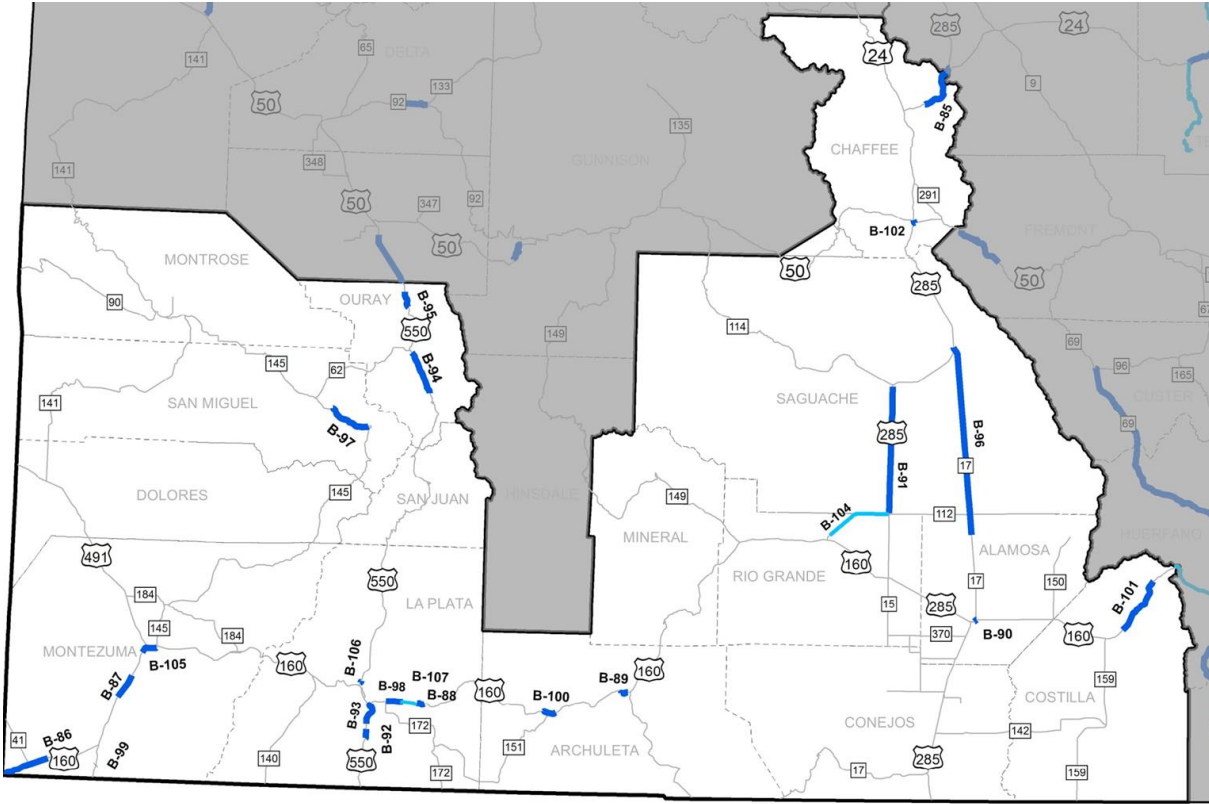


PLANNING REGION 3 PROJECTS



- I-70: Business Loop
- I-70: Palisade to Debeque
- I-70 West: Dowd Canyon Interchange
- I-70 West: Vail Pass
- I-70 West: Exit 203 Interchange Improvements
- I-70 West: Frisco to Silverthorne Auxiliary Lane
- I-70 West: Silverthorne Interchange
- US 40: Fraser to Winter Park
- US 50: Little Blue Canyon
- SH 9: Frisco North
- SH 13: Rifle North
- SH 13: Rio Blanco to County Line Shoulders and Passing Lanes
- SH 13: Wyoming South
- SH 139: Little Horse South
- I-70: Garfield County Interchange Improvements (New Castle)
- I-70: Glenwood Canyon Bridge Rail & Pavement
- US 40: Kremmling East and West Phase I
- **6 more projects**

PLANNING REGION 5 PROJECTS



- US 24: Safety and Mobility Improvements on Trout Creek Pass - Phase II
- US 160: Reconstruction, Shoulders
- US 160: Towaoc Passing Lanes
- US 160: Dry Creek Passing and Mobility Improvements
- US 160: Pagosa Reconstruction and Multi-Modal Improvements
- US 285: Safety and Mobility Improvements between Center to Saguache
- US 550/US 160 Connection
- US 550: Ridgway to Ouray Shoulder Widening
- US 550: Shoulder Improvements, Deer Fencing and Animal Underpasses
- SH 145: Safety and Mobility Improvements
- US 50 Passing Lanes
- US 160 Safety and Mobility Improvements CR 225 to Dry Creek
- **9 more projects**

LOCAL PRIORITIES



New dollars dedicated to municipal and county transportation projects



Projects selected by local leaders, not mandated by the state

Potential Local Projects to Fund:

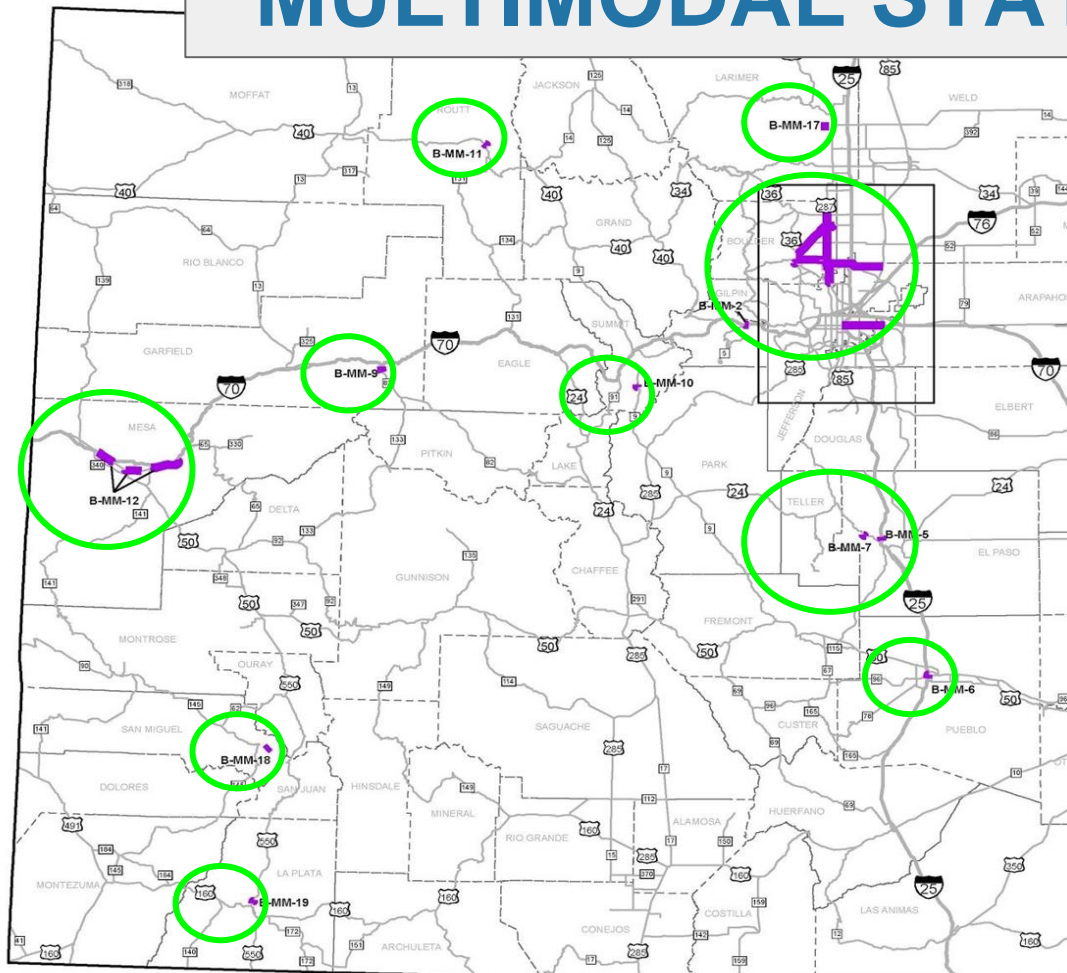
- ✓ Street repaving and pothole repair
- ✓ Matching for state projects
- ✓ New intersections
- ✓ Lane widening
- ✓ Shoulders
- ✓ Bridge repair
- ✓ Sidewalks
- ✓ Bike lanes
- ✓ Transit projects

MULTI-MODAL MOBILITY



- ✓ Leverage state and local dollars for projects
- ✓ Fund local multimodal projects across the state
- ✓ Fund large scale, statewide projects **directly from a strategic list**

MULTIMODAL STATE PROJECTS



- East Colfax BRT
- Idaho Springs Parking and Transit Center
- SH 7, Downtown Boulder to Downtown Brighton
- US 6 Peaks to Plains Trail
- Colorado Springs Downtown Transit Center
- Pueblo City Transit Maintenance and Administration Facility
- Manitou Springs Transit Hub
- North Avenue (US 6) Corridor Improvements (Grand Junction)
- RFTA Glenwood Maintenance Facility Expansion
- Breckenridge Transit Station Rebuild
- Steamboat Springs Transit Center Renovation
- US 6 Corridor Transit Improvements (Mesa County)
- US 287- from SH 66 to US 36
- SH 42/95th Street
- US 36/28th Street and SH 93/Broadway
- SH 119- Downtown Boulder to Longmont
- Fort Collins West Elizabeth BRT
- Transit System Replacement between Mountain Village and Telluride
- Transit and ADA Accessibility Upgrades (Durango)

BUILDING MOMENTUM

- » **Ballots Are Out!**
- » **Statewide Events Underway**
- » **7,500 Yard Signs Across Colorado**



Editorial Board Endorsements

Denver Post, The Journal, Boulder Daily Camera, The Coloradan, Craig Daily Press, Aurora Sentinel, Durango Herald, Steamboat Pilot

BIPARTISAN STATEWIDE COALITION

Chambers of Commerce & Economic

Development

Arvada Chamber of Commerce

Boulder Chamber of Commerce

Colorado Black Chamber of Commerce

Denver Metro Chamber of Commerce

Discover Northeast Colorado

Douglas County Business Alliance

Downtown Denver Partnership

Fort Collins Area Chamber of Commerce

Grand Junction Chamber of Commerce

Hispanic Chamber of Commerce

Metro North Chamber of Commerce

Adams County Economic Development

Denver South Economic Development Corporation

Jefferson County Economic Development Corporation

Lincoln County Economic Development Corporation

Metro Denver Economic Development Corporation

Yuma County Economic Development Corporation

Vail Valley Partnership

Visit Denver

Business Community

BURNCO Colorado

Caddis, LLC

Castle Rock Construction Company

Cemex

Dent Kore, LLC

Duckels Construction

FulcrumOne

Kaiser Permanente

Kraemer North America

KR Swerdfeger Construction

Lawrence Construction Company

Martin Marietta

Mountain Grit

Muller Engineering

Peak Consulting Group

PK Electric, Inc.

RS&H / TSH

SilversJacobson, LLC

South Platte Investments & Planning

Transpro Burgener Trucking

United Companies

Via Mobility Services

VR Business Brokers

Wagner Equipment Company

Worldwide Rental Services

Associations

American Concrete Pavement Association

American Council of Engineering Companies

American Heart Association

American Subcontractors Association Colorado

Associated General Contractors

Building Jobs 4 Colorado

Colorado Asphalt Pavement Association

Colorado Association of Home Builders

Colorado Association of Realtors PAC

Colorado Association of Transit Agencies

Colorado Bankers Association

Colorado Bioscience Association

Colorado Contractors Association

Colorado Gaming Association

Colorado Nonprofit Association

CoPIRG

Colorado Rural Electric Association

Colorado Senior Lobby

I-70 Coalition

LiveWell Colorado

Colorado Association of Mechanical & Plumbing
Contractors

Mountain View Electric Association, Inc.

Ports to Plains Alliance

Western Colorado Contractors Association

BIPARTISAN STATEWIDE COALITION

Counties

Adams County
Boulder County
Broomfield County
Cheyenne County
Clear Creek County
Eagle County
Gunnison County
Gilpin County
Hinsdale County
Kit Carson Count
Lincoln County
Otero County
Ouray County
Pitkin County
Pueblo County
San Miguel County
Summit County
Yuma County

Municipalities

Arvada
Avon
Bayfield
Boulder
Broomfield
Bow Mar
Dillon
Elizabeth
Frisco
Julesburg
Lafayette
Limon
Littleton
Lone Tree
Longmont
Minturn
Northglenn
Sheridan
Silverthorne
Thornton
Vail
Yuma

Mayors

Marc Williams, **Arvada**
Bob LeGare, **Aurora**
Royce Pindell, **Bennett**
Suzanne Jones, **Boulder**
Tom Feldkamp, **Bow Mar**
Ken Kreutzer, **Brighton**
Karen Stuart, **Broomfield**
Tera Radloff, **Castle Pines**
Laura Christman, **Cherry Hills Village**
Sean Ford, **Commerce City**
Michael Hancock, **Denver**
Laura Keegan, **Edgewater**
Jennifer Carroll, **Erie**
Daniel Dick, **Federal Heights**
Marjorie Sloan, **Golden**
Ron Rakowsky, **Greenwood Village**
Christine Berg, **Lafayette**
Adam Paul, **Lakewood**
Debbie Brinkman, **Littleton**
Jackie Millet, **Lone Tree**
Brian Bagley, **Longmont**
Bob Muckle, **Louisville**
Connie Sullivan, **Lyons**
Carol Dodge, **Northglenn**
Tara Bieter-Fluhr, **Sheridan**
Clint Folsom, **Superior**
Heidi Williams, **Thornton**
Bud Starker, **Wheat Ridge**
Herb Atchison, **Westminster**

State Government Officials

Governor John Hickenlooper

Senator Steve Fenberg
Senator Andy Kerr
Senator Dominick Moreno
Senator Kevin Priola
Senator Rachel Zenzinger
Senator Cheri Jahn
Senator Nancy Todd
Senator Matt Jones
Senator Rhonda Fields
Senator Irene Aguilar
Senator Angela Williams
Senator Don Coram
Representative Chris Hansen
Representative Dylan Roberts
Representative Edie Hooton
Representative Pete Lee
Representative Matt Gray
Representative Chris Kennedy
Representative Susan Lontine
Representative Brittany Pettersen
Representative Barbara McLachlan
Representative Phil Covarrubias
Representative Don Valdez
RTD Board Member Judy Lublow

BIPARTISAN STATEWIDE COALITION

Regional Organizations

Action 22
Club 20
Counties and Commissioners Acting Together (CCAT)
Colorado Counties Inc (CCI)
Colorado Municipal League (CML)
Commuting Solutions
Democratic Party of Denver
Gunnison Valley RTA
Metro Mayors Caucus
Move Colorado
Morgan County Democrats
North Area Transportation Alliance
Phillips County GOP
Pro 15
Smart Commute Metro North
US 36 Mayors & Commissioners Coalition

Environmental Groups

Conservation Colorado
Southwest Energy Efficiency Partnership (SWEEP)
Bicycle Colorado
Agriculture
Colorado Association of Wheat Growers
Colorado Cattlemens' Association
Colorado Corn Growers Association
Colorado Dairy Farmers
Colorado Farm Bureau
Colorado Horse Council
Colorado Livestock Association
Colorado Pork Producers Council
Rocky Mountain Farmers Union

Labor Unions

Colorado AFL-CIO
Colorado Fraternal Order of Police
Laborers' International Union of North America (LIUNA)
Mechanical Contractors Association of Colorado (MCA)
Mechanical Service Contractors Association of Colorado (MSCA)

PROP. 109 - NOT A SOLUTION

The Policy

- Proceeds of \$3.5 billion in mandated bonding to be used *solely* on 66 state road and bridge expansion, construction, maintenance and repair projects
- Mandates repayment must come from Colorado General Fund

The Problems

- Only pays for **\$2 billion** of the promised \$5.6 billion worth of projects
- **No local funding**
- *Prohibits* **multimodal** or transit funding
- **No maintenance** costs for projects outside the list
- **\$260 million/year** coming out of the General Fund away from other priorities (education, healthcare)

PROP. 109 - THINK TANK PROPOSAL

WHAT'S MISSING?

- *Ignores 88% of of **Local Colorado Roads***
- *Ignores \$9 Billion in state need - **only \$2 Billion in NET impact***
- *Ignores Maintenance*
- *Ignores **transit needs** of seniors, low-income and rural Colorado citizens in need of transportation*
- *Ignores the need for a **reliable revenue source** to repay bonds - putting repayment in the hands of politicians*

THE ONLY SOLUTION - PROP. 110

- Raises significant new funding in the first year
- Just 6 cents on \$10 purchase
- Addresses State & Local needs
- Tourists contribute to the solution



**LET'S GO,
COLORADO**
YES ON 110

Find us at:
letsgocolorado.com