

# Colorado Association of Ski Towns

Denver, CO

March 15, 2018



**COLORADO**  
State Land Board

Department of Natural Resources

# State Land Board Impact on Education

## 10yr Distributions

( July 2008-December 2017)

\$597 million to BEST (capital construction for school buildings)

+

\$385 million to Permanent Fund (endowment for schools)

+

\$380 million to School Finance Act (Department of Education's operating budget)

---

**= \$1.36 billion to schools**



**COLORADO**  
State Land Board

Department of Natural Resources

CAST  
3.15.18

# US History

1780s ... Our Founding Fathers consider the concept of lands for schools.



*~1780s  
America's Founders*



*~1860s  
American Schoolchildren*



**COLORADO**  
State Land Board  
Department of Natural Resources

CAST  
3.15.18

# States with Trust Land



**COLORADO**

**State Land Board**

Department of Natural Resources

CAST  
3.15.18



# Colorado Constitution (1876)

*The Colorado Enabling Act (1875), Section 7 of Act: “[sections 16 and 36] ... are hereby granted to said state for the support of common schools.”*

The Colorado Constitution (1876) created the State Board of Land Commissioners.

6	5	4	3	2	1
7	8	9	10	11	12
18	17	16	15	14	13
19	20	21	22	23	24
30	29	28	27	26	25
31	32	33	34	35	36



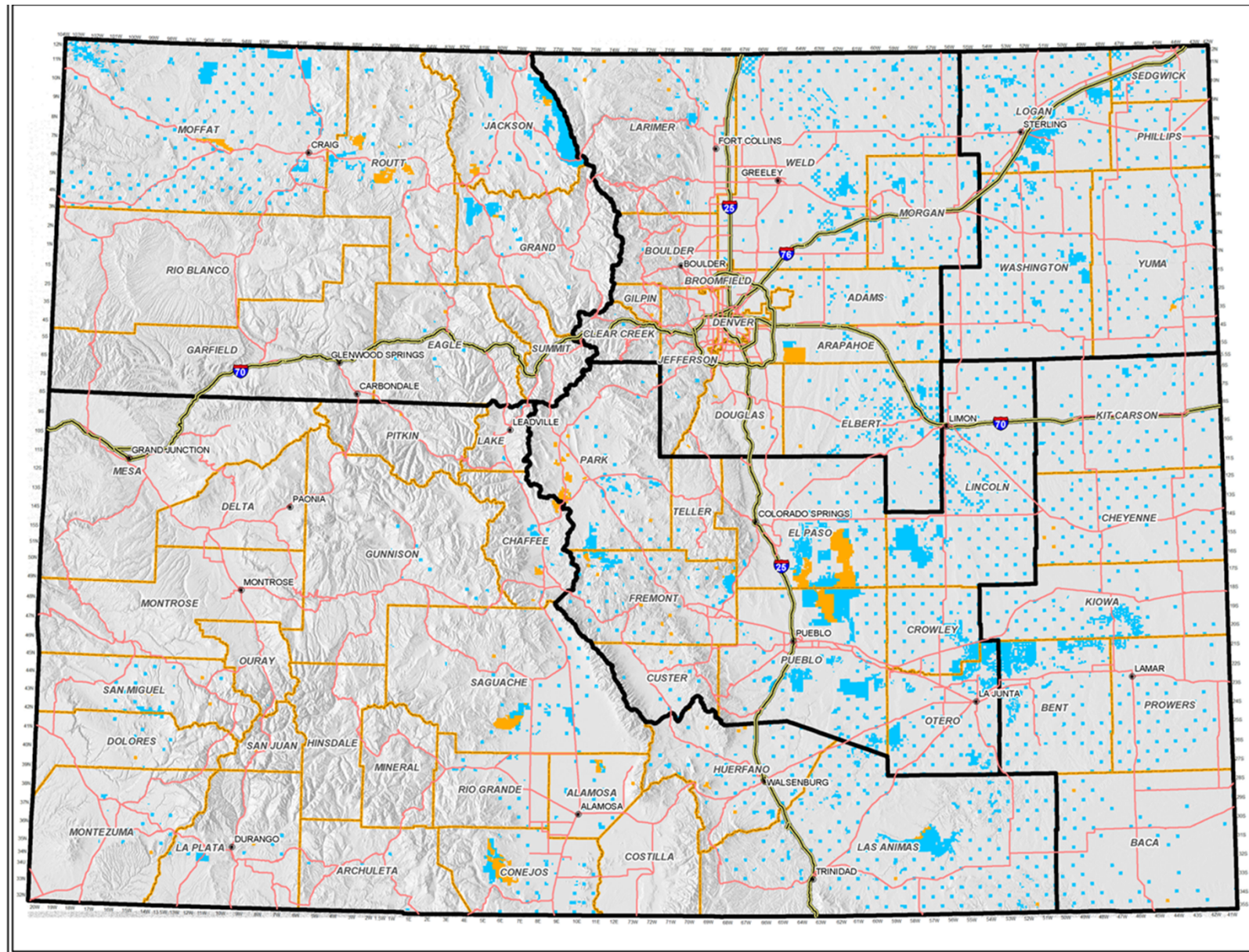
*~1900 schoolhouse  
Gilpin, CO*



**COLORADO**  
State Land Board

Department of Natural Resources

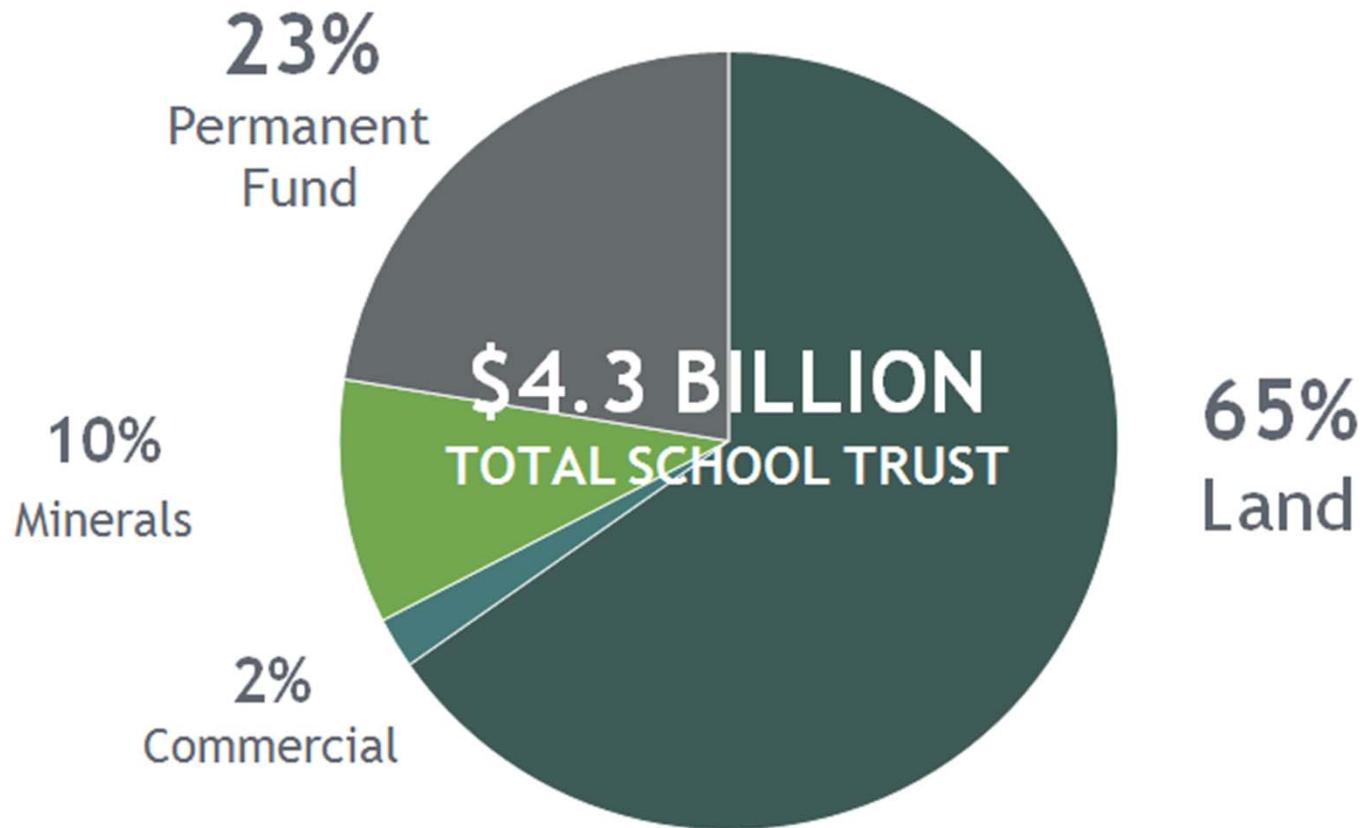
CAST  
3.15.18



**COLORADO**  
**State Land Board**  
 Department of Natural Resources

CAST  
 3.15.18

# School Trust Endowment



**COLORADO**  
State Land Board  
Department of Natural Resources

CAST  
3.15.18



# Colorado State Trust Land

## Mission

Manage an endowment of assets held in perpetual, intergenerational, public trusts for the financial support of Colorado's public schools and other public institutions

## Mandate

Reasonable and consistent income over time AND protecting and enhancing natural values

## Vision

Colorado's trust lands will be recognized as one of the most significant assets in our state, providing value for each generation of beneficiaries

## Fiduciary Duty

Legal and ethical obligation to act solely in the best interest of beneficiaries



**COLORADO**  
State Land Board

Department of Natural Resources

CAST  
3.15.18



# Operations

- Governed by five-person Board of Commissioners; represent beneficiaries, but have specific areas of experience



**COLORADO**  
State Land Board  
Department of Natural Resources

CAST  
3.15.18

# Operations

- Governed by five-person Board of Commissioners; represent beneficiaries, but have specific areas of experience
- Manage eight trusts for public beneficiaries; largest the Public School Trust (more than 98% of revenue and ownership)



**COLORADO**  
State Land Board

Department of Natural Resources

CAST  
3.15.18

# Operations

- Governed by five-person Board of Commissioners; represent beneficiaries, but have specific areas of experience
- Manage eight trusts for public beneficiaries; largest the **Public School Trust** (more than 98% of revenue and ownership)
- 45 employees and \$6 million operating budget; 7 offices across the state; heavily reliant on lessees/partners



**COLORADO**  
State Land Board

Department of Natural Resources

CAST  
3.15.18

# Operations

- Governed by five-person Board of Commissioners; represent beneficiaries, but have specific areas of experience
- Manage eight trusts for public beneficiaries; largest the **Public School Trust** (more than 98% of revenue and ownership)
- 45 employees and \$6 million operating budget; 7 offices across the state; heavily reliant on lessees/partners
- No tax dollars used - funded entirely from operations



**COLORADO**  
State Land Board  
Department of Natural Resources

CAST  
3.15.18



# Operations

- Governed by five-person Board of Commissioners; represent beneficiaries, but have specific areas of experience
- Manage eight trusts for public beneficiaries; largest the **Public School Trust** (more than 98% of revenue and ownership)
- 45 employees and \$6 million operating budget; 7 offices across the state; heavily reliant on lessees/partners
- No tax dollars used - funded entirely from operations
- Asset owner; not operator
- Layer leases and contracts



**COLORADO**  
State Land Board  
Department of Natural Resources

CAST  
3.15.18

# Operations

- Governed by five-person Board of Commissioners; represent beneficiaries, but have specific areas of experience
- Manage eight trusts for public beneficiaries; largest the **Public School Trust** (more than 98% of revenue and ownership)
- 45 employees and \$6 million operating budget; 7 offices across the state; heavily reliant on lessees/partners
- No tax dollars used - funded entirely from operations
- Asset owner; not operator
- Layer leases and contracts
- Trust lands are not open to public access



**COLORADO**  
State Land Board

Department of Natural Resources

CAST  
3.15.18

# Operations

- Governed by five-person Board of Commissioners; represent beneficiaries, but have specific areas of experience
- Manage eight trusts for public beneficiaries; largest the **Public School Trust** (more than 98% of revenue and ownership)
- 45 employees and \$6 million operating budget; 7 offices across the state; heavily reliant on lessees/partners
- No tax dollars used - funded entirely from operations
- Asset owner; not operator
- Layer leases and contracts
- Trust lands are not open to public access
- Subject to local land use regulations



**COLORADO**  
State Land Board

Department of Natural Resources

CAST  
3.15.18

*Subject to local land use regulations*



**COLORADO**  
State Land Board  
Department of Natural Resources

CAST  
3.15.18



# You and Us



**COLORADO**

**State Land Board**

Department of Natural Resources

CAST  
3.15.18



# Colorado & The West

Steve Campbell, State/Region Editor — 892-5381

## Officials reject resort in Jackson County

State Land Board won't allow developer to build

condominiums on 4,200 acres of Colorado State Forest cheered the board's decision. Jackson County

because now we get a chance to decide what we want in Colorado in the next 20 years." The board had estimated

Save the Colorado State Forest. The coalition chartered several buses to bring members to the meeting at the Colorado Division

tions or opposition.

The State Land Board received about 2,200 letters or calls about the proposal, with 92% of those

### North Park ski proposal looks like a snow job

Considering how many ski areas have failed in Colorado in recent years, and how many still may be on the block, it's hard to imagine why anyone would risk building another one, especially in an area as remote as North Park.

Yet that's apparently what California developer Fred Sauer has in mind. He wants to put a Keystone-style, four-season resort on 6 square miles of state-owned land on the west side of Cameron Pass, about 75 miles west of Fort Collins — about 140 miles from Denver.

than a ski area on, say, Quail Mountain. That's a site south of Leadville that was put on ice about 10 years ago, even though it could be reached from Colorado Springs or Pueblo without going over a mountain pass, and even though it would have brought new jobs to an economically distressed part of the state.

In addition to questioning the need and demand for Sauer's proposed Seven Utes Resort, the board should closely examine such other critical issues as its impacts on the state park that now occupies the site, and on the

# Seven Utes

Developers won't give up on plans to put a resort on the mountain



**COLORADO**  
State Land Board

Department of Natural Resources

CAST  
3.15.18



# Contracts with Municipalities



**COLORADO**  
State Land Board  
Department of Natural Resources

CAST  
3.15.18



# Contracts with Municipalities

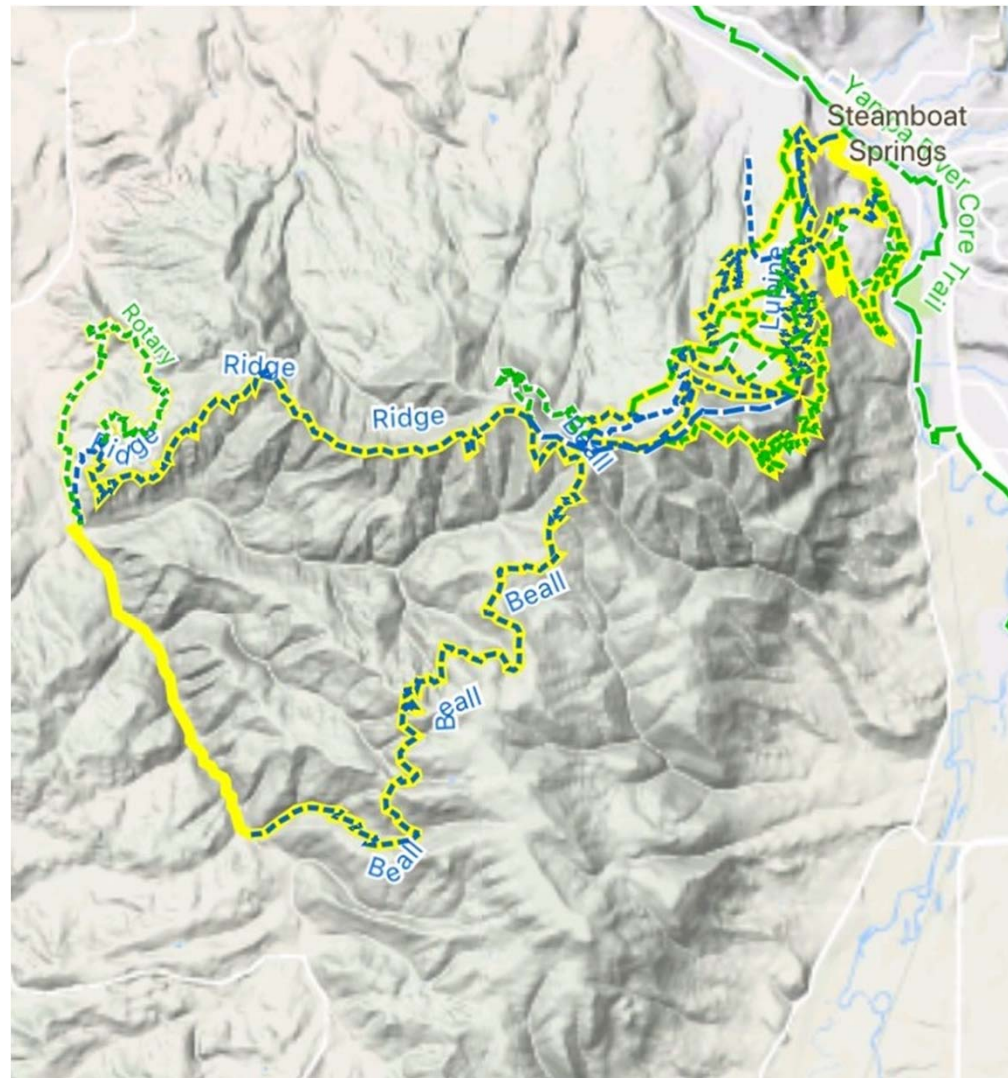


**COLORADO**  
State Land Board

Department of Natural Resources

CAST  
3.15.18

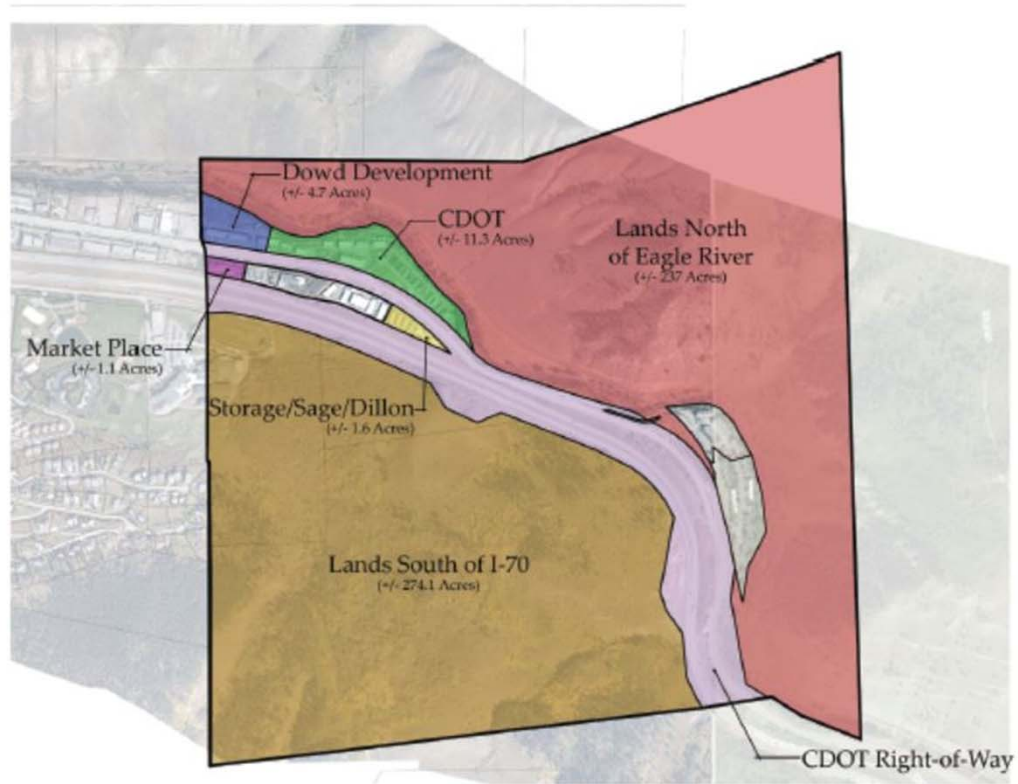
# Contracts with Municipalities



**COLORADO**  
State Land Board  
Department of Natural Resources

CAST  
3.15.18

# Contracts with Municipalities



**COLORADO**  
State Land Board  
Department of Natural Resources

CAST  
3.15.18



# Lines of Business

- Agriculture (grazing, dry land crop production, and irrigated farming) (2290)
- Commercial leasing (22)
- Mining (limestone, gypsum, coal, precious metals, and more) (310)
- Oil and gas (1309)
- Recreation (hunting, fishing, hiking, horseback riding, and more) (240)
- Renewable energy (solar, wind, hydropower, geothermal, and biomass/bioenergy) (35)
- Rights-of-ways (2950)
- Tower sites (26)
- Other (ecosystem services, water resources, etc.) (280)



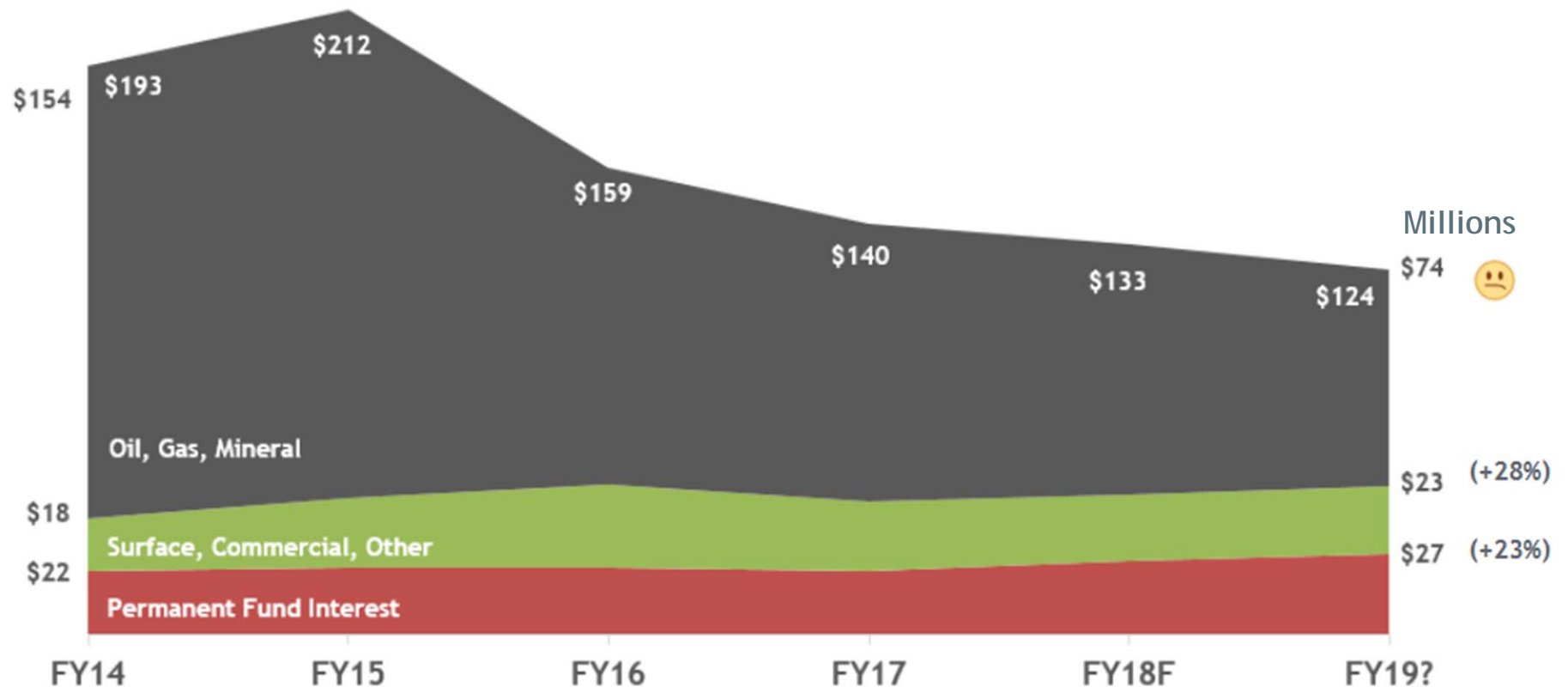
**COLORADO**  
State Land Board

Department of Natural Resources

CAST  
3.15.18



# Recent School Trust Revenues

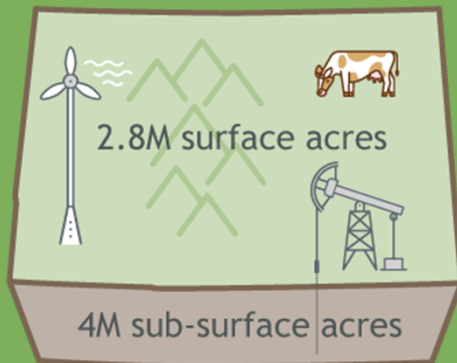


**COLORADO**  
State Land Board  
Department of Natural Resources

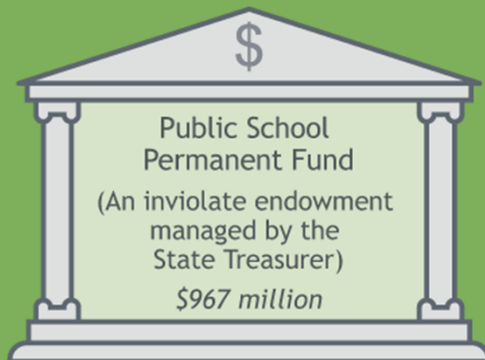
CAST  
3.15.18

**Assets: \$4.3 billion**

**Land and Minerals**



**Financial**



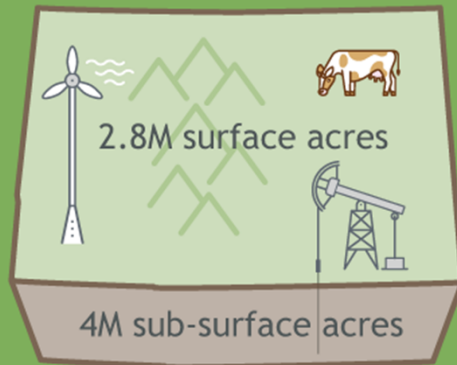
**COLORADO**  
**State Land Board**

Department of Natural Resources

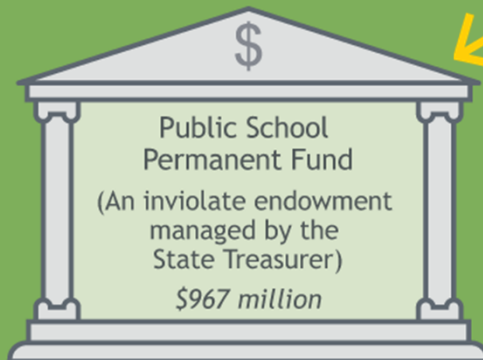
CAST  
3.15.18

## Assets: \$4.3 billion

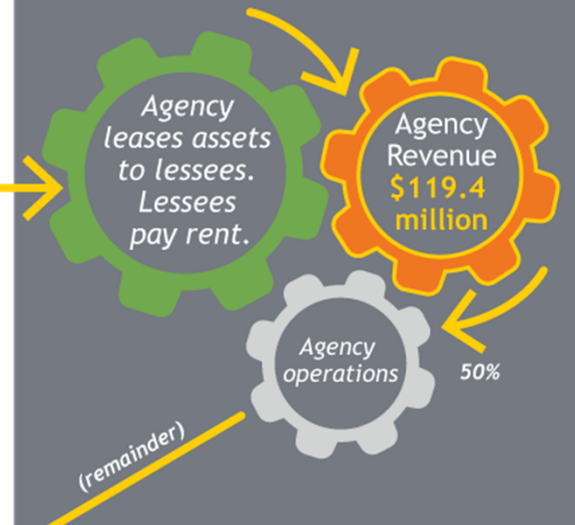
### Land and Minerals



### Financial



## Operations

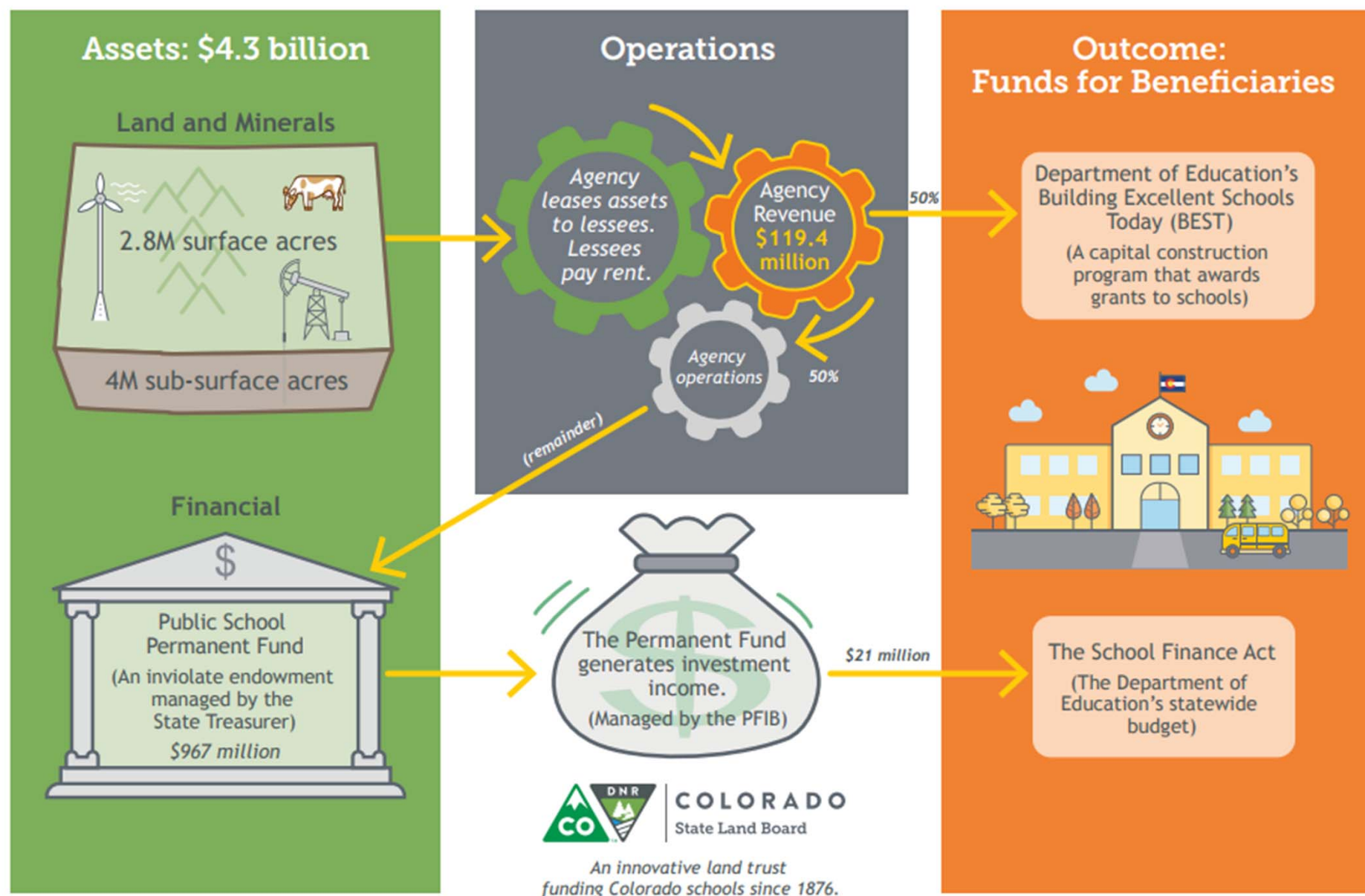


**COLORADO**  
State Land Board

Department of Natural Resources

CAST  
3.15.18

# Current State Land Board Revenue Flow to Schoolchildren (FY 16–17)





# \$1.4 billion to support CO schools



**COLORADO**  
State Land Board  
Department of Natural Resources

CAST  
3.15.18