

WHERE WILD MEETS LIFE



Where Wild Meets Life



Estes Park Promise: Your favorite way to experience Colorado, where exceptional, natural outdoor adventures are a way of life. Extraordinary beauty... real wildlife...

Estes Park and Rocky Mountain National Park



Bear and elk interactions most prominent safety issues

Managing People and Elk in Estes Park



Elk Jam video

Managing People and Elk in Estes Park



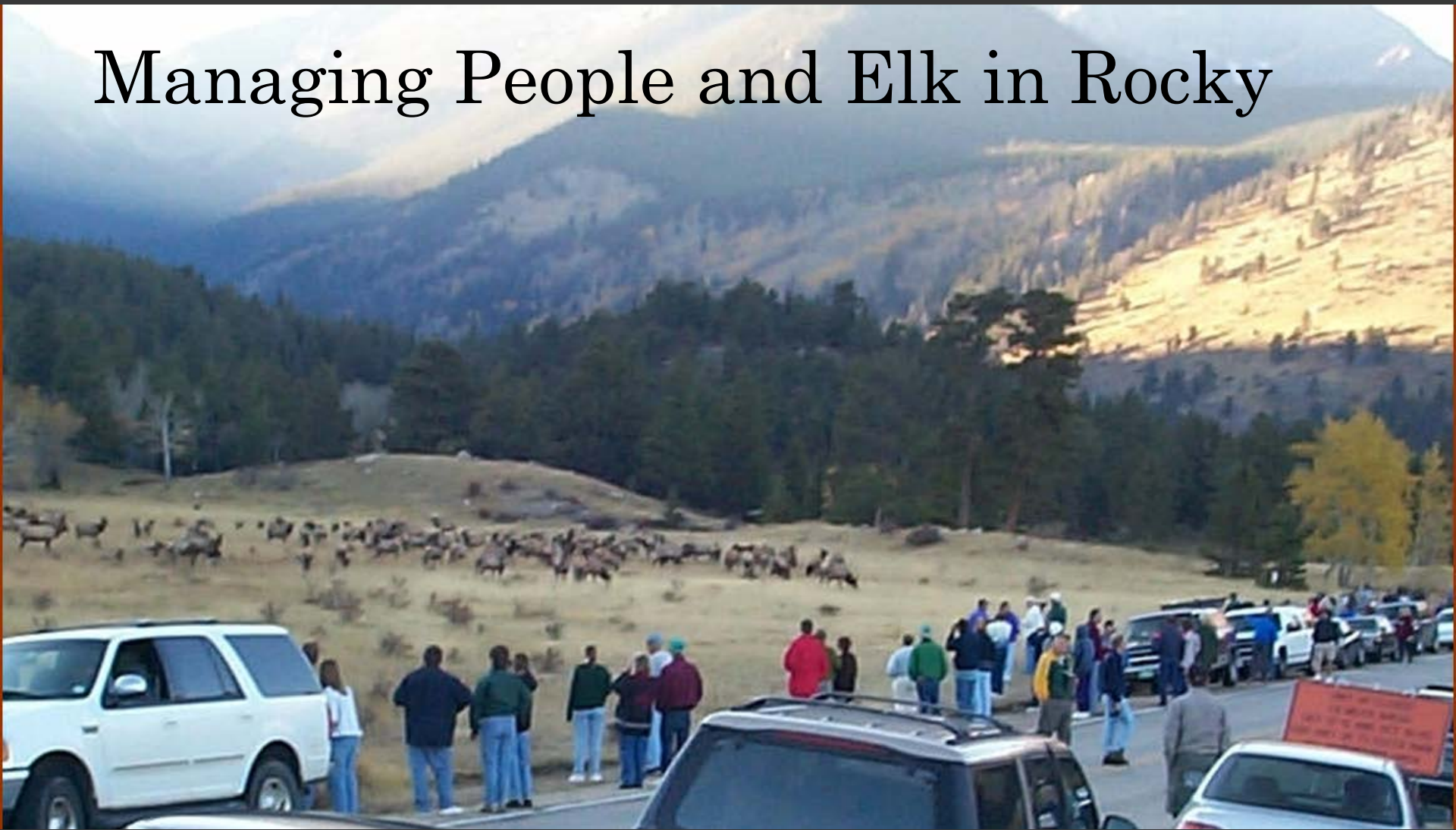
Elk herding by segway video

Managing People and Elk in Estes Park



- Challenges during calving and the rut
- Outreach and education – Elk Cards
- Laws and recent example

Managing People and Elk in Rocky



Challenges

- High Visitation
- Excited Visitors
- Naïve Visitors

Managing People and Elk in Rocky



Staff

- Entrance Gates
- Visitor Center
- Visitor and Resource Protection Rangers
- Naturalists

Managing People and Elk in Rocky



Elk Bugle Corp

Managing People and Elk in Rocky



Continued Challenges

- Impacts Other Visitor Use
- Emergency Response

Managing People and Elk in Rocky



Copyright Ann Schonlau

Education and Outreach

- Website
- Park Newspaper
- Interpretive Programs

Managing people and bears in the Estes Valley



- Partnership: Estes Valley Bear Education Task Force, 2012

Managing people and bears in the Estes Valley



- Increasing incidents
- Police Auxiliary Litter Patrol, 2014
- Wildlife Protection Ordinance, 2015

New Problem! They Hover!



Wildlife Protection Ordinance Highlights

- **Definitions and Standards** - Wildlife, Refuse, Wildlife Resistant Containers, Wildlife Resistant Enclosures, Hard-Sided Containers and Enclosed Structures.
- **Residential Requirements** - Times for pickup days (6am -7pm)
Types of containers (Hard sided container vs. wildlife resistant container) Wildlife Resistant Containers shall not fall within the time requirements and may be left out on the curb without restriction.
- **Construction Refuse Disposal** - All food packaging shall be deposited in a Wildlife Resistant Container.
- **Commercial Refuse Disposal** – Requirement of Wildlife Resistant Container or Enclosure – Including Vacation Rentals.
- **Trash Compactors** – Closed at all times, clean from refuse and debris.
- **Bird Feeders** - Allowed. However, from April through November must be suspended on a cable, inaccessible to bears.

Managing People and Bears in Rocky



Challenges

- Increased Food-Conditioning
- Naïve Visitors
- High Turnover in Visitors

Managing People and Bears in Rocky



Increased
Food-Conditioning



Managing People and Bears in Rocky



Education



Managing People and Bears in Rocky



Signs
Bear Paw Image

Managing People and Bears in Rocky



Facilities

Managing People and Bears in Rocky



Regulations and
Enforcement



WHERE WILD MEETS LIFE



- Questions
- Sharing experiences

